

Datasheet for ABIN2790796  
**anti-KDEL2 antibody (C-Term)**



[Go to Product page](#)

1 Image

## Overview

Quantity:	100 µL
Target:	KDEL2
Binding Specificity:	C-Term
Reactivity:	Human
Host:	Rabbit
Clonality:	Polyclonal
Conjugate:	This KDEL2 antibody is un-conjugated
Application:	Western Blotting (WB)

## Product Details

Immunogen:	The immunogen is a synthetic peptide directed towards the C-terminal region of Human KDEL2
Sequence:	ASVLQGARTE FLPQQRHKML DTENQKLNSF VADSHQWLCK NAEKSQKVS
Predicted Reactivity:	Human: 100%
Characteristics:	This is a rabbit polyclonal antibody against KDEL2. It was validated on Western Blot.
Purification:	Affinity Purified

## Target Details

Target:	KDEL2
Alternative Name:	KDEL2 ( <a href="#">KDEL2 Products</a> )

## Target Details

Background:	<p>Retention of resident soluble proteins in the lumen of the endoplasmic reticulum (ER) is achieved in both yeast and animal cells by their continual retrieval from the cis-Golgi, or a pre-Golgi compartment. Sorting of these proteins is dependent on a C-terminal tetrapeptide signal, usually lys-asp-glu-leu (KDEL) in animal cells, and his-asp-glu-leu (HDEL) in <i>S. cerevisiae</i>. This process is mediated by a receptor that recognizes, and binds the tetrapeptide-containing protein, and returns it to the ER. In yeast, the sorting receptor encoded by a single gene, ERD2, is a seven-transmembrane protein. Unlike yeast, several human homologs of the ERD2 gene, constituting the KDEL receptor gene family, have been described. KDELR2 was the second member of the family to be identified, and it encodes a protein which is 83 % identical to the KDELR1 gene product.</p> <p>Alias Symbols: ELP-1, ERD2.2, FLJ45532</p> <p>Protein Interaction Partner: UBC, ELAVL1, SERINC3,</p> <p>Protein Size: 186</p>
-------------	---

Molecular Weight:	21 kDa
-------------------	--------

Gene ID:	11014
----------	-------

NCBI Accession:	<a href="#">NM_001100603</a> , <a href="#">NP_001094073</a>
-----------------	---

Pathways:	<a href="#">Maintenance of Protein Location</a>
-----------	---

## Application Details

Application Notes:	Optimal working dilutions should be determined experimentally by the investigator.
--------------------	--

Comment:	Antigen size: 186 AA
----------	----------------------

Restrictions:	For Research Use only
---------------	-----------------------

## Handling

Format:	Liquid
---------	--------

Concentration:	Lot specific
----------------	--------------

Buffer:	Liquid. Purified antibody supplied in 1x PBS buffer with 0.09 % (w/v) sodium azide and 2 % sucrose.
---------	---

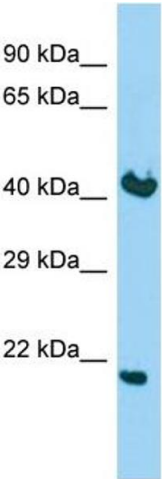
Preservative:	Sodium azide
---------------	--------------

Precaution of Use:	This product contains Sodium azide: a POISONOUS AND HAZARDOUS SUBSTANCE which should be handled by trained staff only.
--------------------	--

Handling

Handling Advice:	Avoid repeated freeze-thaw cycles.
Storage:	-20 °C
Storage Comment:	For short term use, store at 2-8°C up to 1 week. For long term storage, store at -20°C in small aliquots to prevent freeze-thaw cycles.

Images



**Western Blotting**

**Image 1.** Host: Rabbit Target Name: KDELR2 Sample Type: Fetal Brain lysates Antibody Dilution: 1.0ug/ml