

Datasheet for ABIN2790801  
**anti-KPRP antibody (C-Term)**[Go to Product page](#)

## 1 Image

## Overview

Quantity:	100 µL
Target:	KPRP
Binding Specificity:	C-Term
Reactivity:	Human
Host:	Rabbit
Clonality:	Polyclonal
Conjugate:	This KPRP antibody is un-conjugated
Application:	Western Blotting (WB)

## Product Details

Immunogen:	The immunogen is a synthetic peptide directed towards the C-terminal region of Human KPRP
Sequence:	PHRLDTEAPY CGPSSYNQGQ ESGAGCGPGD VFPERRGQDG HGDQGNFAFAG
Predicted Reactivity:	Human: 100%
Characteristics:	This is a rabbit polyclonal antibody against KPRP. It was validated on Western Blot.
Purification:	Affinity Purified

## Target Details

Target:	KPRP
Alternative Name:	KPRP ( <a href="#">KPRP Products</a> )
Background:	The function of this protein remains unknown.

## Target Details

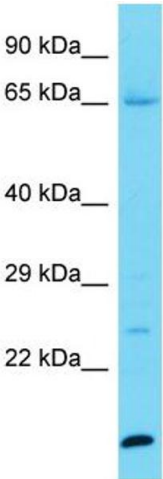
	Alias Symbols: C1orf45 Protein Interaction Partner: MPG, IQCB1, CDK2, UBC, Protein Size: 579
Molecular Weight:	64 kDa
Gene ID:	448834
NCBI Accession:	<a href="#">NM_001025231</a> , <a href="#">NP_001020402</a>
UniProt:	<a href="#">Q5T749</a>

## Application Details

Application Notes:	Optimal working dilutions should be determined experimentally by the investigator.
Comment:	Antigen size: 579 AA
Restrictions:	For Research Use only

## Handling

Format:	Liquid
Concentration:	Lot specific
Buffer:	Liquid. Purified antibody supplied in 1x PBS buffer with 0.09 % (w/v) sodium azide and 2 % sucrose.
Preservative:	Sodium azide
Precaution of Use:	This product contains Sodium azide: a POISONOUS AND HAZARDOUS SUBSTANCE which should be handled by trained staff only.
Handling Advice:	Avoid repeated freeze-thaw cycles.
Storage:	-20 °C
Storage Comment:	For short term use, store at 2-8°C up to 1 week. For long term storage, store at -20°C in small aliquots to prevent freeze-thaw cycles.



Western Blotting

**Image 1.** Host: Rabbit Target Name: KPRP Sample Type: Jurkat Whole Cell lysates Antibody Dilution: 1.0ug/ml