

Datasheet for ABIN2790802
anti-Keratin 25 antibody (C-Term)[Go to Product page](#)

1 Image

Overview

Quantity:	100 µL
Target:	Keratin 25 (KRT25)
Binding Specificity:	C-Term
Reactivity:	Human, Mouse, Horse, Rabbit, Rat, Cow, Sheep, Dog, Goat, Guinea Pig
Host:	Rabbit
Clonality:	Polyclonal
Conjugate:	This Keratin 25 antibody is un-conjugated
Application:	Western Blotting (WB)

Product Details

Immunogen:	The immunogen is a synthetic peptide directed towards the C-terminal region of Human KRT25
Sequence:	HQVRTETEGQ KLEYEQLLDI KLHLEKEIET YCLLIGGDDG ACKSGGYKSK
Predicted Reactivity:	Cow: 100%, Dog: 100%, Goat: 100%, Guinea Pig: 100%, Horse: 100%, Human: 100%, Mouse: 100%, Rabbit: 100%, Rat: 100%, Sheep: 100%
Characteristics:	This is a rabbit polyclonal antibody against KRT25. It was validated on Western Blot.
Purification:	Affinity Purified

Target Details

Target:	Keratin 25 (KRT25)
Alternative Name:	KRT25 (KRT25 Products)

Target Details

Background: This gene encodes a member of the type I (acidic) keratin family, which belongs to the superfamily of intermediate filament (IF) proteins. Keratins are heteropolymeric structural proteins which form the intermediate filament. These filaments, along with actin microfilaments and microtubules, compose the cytoskeleton of epithelial cells. The type I keratin genes are clustered in a region of chromosome 17q12-q21.

Alias Symbols: KRT25A

Protein Interaction Partner: UBC,

Protein Size: 450

Molecular Weight: 49 kDa

Gene ID: 147183

NCBI Accession: [NM_181534](#), [NP_853512](#)

UniProt: [Q7Z3Z0](#)

Application Details

Application Notes: Optimal working dilutions should be determined experimentally by the investigator.

Comment: Antigen size: 450 AA

Restrictions: For Research Use only

Handling

Format: Liquid

Concentration: Lot specific

Buffer: Liquid. Purified antibody supplied in 1x PBS buffer with 0.09 % (w/v) sodium azide and 2 % sucrose.

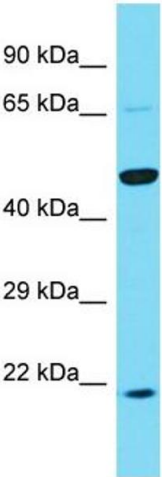
Preservative: Sodium azide

Precaution of Use: This product contains Sodium azide: a POISONOUS AND HAZARDOUS SUBSTANCE which should be handled by trained staff only.

Handling Advice: Avoid repeated freeze-thaw cycles.

Storage: -20 °C

Storage Comment: For short term use, store at 2-8°C up to 1 week. For long term storage, store at -20°C in small aliquots to prevent freeze-thaw cycles.



Western Blotting

Image 1. Host: Rabbit Target Name: KRT25 Sample Type: PANC1 Whole Cell lysates Antibody Dilution: 1.0ug/ml