

Datasheet for ABIN2790808
anti-LEKR1 antibody (C-Term)[Go to Product page](#)

1 Image

Overview

Quantity:	100 µL
Target:	LEKR1
Binding Specificity:	C-Term
Reactivity:	Human, Cow, Dog, Guinea Pig, Horse, Mouse, Rabbit, Rat, Zebrafish (Danio rerio)
Host:	Rabbit
Clonality:	Polyclonal
Conjugate:	This LEKR1 antibody is un-conjugated
Application:	Western Blotting (WB)

Product Details

Immunogen:	The immunogen is a synthetic peptide directed towards the C-terminal region of Human LEKR1
Sequence:	FLQETVRREC EERFELTEAL SQAREQLLEL SKLRGSLPFS PCSLSKGS LT
Predicted Reactivity:	Cow: 100%, Dog: 100%, Guinea Pig: 100%, Horse: 100%, Human: 100%, Mouse: 100%, Rabbit: 100%, Rat: 100%, Zebrafish: 86%
Characteristics:	This is a rabbit polyclonal antibody against LEKR1. It was validated on Western Blot.
Purification:	Affinity Purified

Target Details

Target:	LEKR1
Alternative Name:	LEKR1 (LEKR1 Products)

Target Details

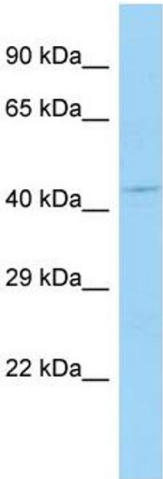
Background:	The function of this protein remains unknown. Alias Symbols: FLJ16641, FLJ37161 Protein Size: 388
Molecular Weight:	43 kDa
Gene ID:	389170
NCBI Accession:	NM_001004316 , NP_001004316
UniProt:	Q6ZMV7

Application Details

Application Notes:	Optimal working dilutions should be determined experimentally by the investigator.
Comment:	Antigen size: 388 AA
Restrictions:	For Research Use only

Handling

Format:	Liquid
Concentration:	Lot specific
Buffer:	Liquid. Purified antibody supplied in 1x PBS buffer with 0.09 % (w/v) sodium azide and 2 % sucrose.
Preservative:	Sodium azide
Precaution of Use:	This product contains Sodium azide: a POISONOUS AND HAZARDOUS SUBSTANCE which should be handled by trained staff only.
Handling Advice:	Avoid repeated freeze-thaw cycles.
Storage:	-20 °C
Storage Comment:	For short term use, store at 2-8°C up to 1 week. For long term storage, store at -20°C in small aliquots to prevent freeze-thaw cycles.



Western Blotting

Image 1. Host: Rabbit Target Name: LEKR1 Sample Type: Jurkat Whole Cell lysates Antibody Dilution: 1.0ug/ml