

Datasheet for ABIN2790810
anti-LHFPL4 antibody (C-Term)[Go to Product page](#)

1 Image

Overview

Quantity:	100 µL
Target:	LHFPL4
Binding Specificity:	C-Term
Reactivity:	Cow, Guinea Pig, Human, Mouse, Rabbit, Rat, Dog, Zebrafish (Danio rerio)
Host:	Rabbit
Clonality:	Polyclonal
Conjugate:	This LHFPL4 antibody is un-conjugated
Application:	Western Blotting (WB)

Product Details

Immunogen:	The immunogen is a synthetic peptide directed towards the C-terminal region of Human LHFPL4
Sequence:	LCLVLGCMIF PDGWD AETIR DMCGAKTGKY SLGD C SVRWA YILAIIGILN
Predicted Reactivity:	Cow: 100%, Dog: 93%, Guinea Pig: 100%, Human: 100%, Mouse: 100%, Rabbit: 100%, Rat: 100%, Zebrafish: 79%
Characteristics:	This is a rabbit polyclonal antibody against LHFPL4. It was validated on Western Blot.
Purification:	Affinity Purified

Target Details

Target:	LHFPL4
---------	--------

Target Details

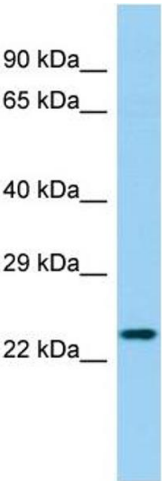
Alternative Name:	LHFPL4 (LHFPL4 Products)
Background:	<p>This gene is a member of the lipoma HMGIC fusion partner (LHFP) gene family, which is a subset of the superfamily of tetraspan transmembrane protein encoding genes. Mutations in one LHFP-like gene result in deafness in humans and mice, and a second LHFP-like gene is fused to a high-mobility group gene in a translocation-associated lipoma.</p> <p>Alias Symbols: MGC133162</p> <p>Protein Size: 247</p>
Molecular Weight:	27 kDa
Gene ID:	375323
NCBI Accession:	NM_198560 , NP_940962
UniProt:	Q7Z7J7

Application Details

Application Notes:	Optimal working dilutions should be determined experimentally by the investigator.
Comment:	Antigen size: 247 AA
Restrictions:	For Research Use only

Handling

Format:	Liquid
Concentration:	Lot specific
Buffer:	Liquid. Purified antibody supplied in 1x PBS buffer with 0.09 % (w/v) sodium azide and 2 % sucrose.
Preservative:	Sodium azide
Precaution of Use:	This product contains Sodium azide: a POISONOUS AND HAZARDOUS SUBSTANCE which should be handled by trained staff only.
Handling Advice:	Avoid repeated freeze-thaw cycles.
Storage:	-20 °C
Storage Comment:	For short term use, store at 2-8°C up to 1 week. For long term storage, store at -20°C in small aliquots to prevent freeze-thaw cycles.



Western Blotting

Image 1. Host: Rabbit Target Name: LHFPL4 Sample Type: Fetal Heart lysates Antibody Dilution: 1.0ug/ml