



[Go to Product page](#)

Datasheet for ABIN2790812

anti-MESDC1 antibody (N-Term)

1 Image

Overview

Quantity:	100 µL
Target:	MESDC1
Binding Specificity:	N-Term
Reactivity:	Human, Rat, Cow, Dog, Horse, Mouse
Host:	Rabbit
Clonality:	Polyclonal
Conjugate:	This MESDC1 antibody is un-conjugated
Application:	Western Blotting (WB)

Product Details

Immunogen:	The immunogen is a synthetic peptide directed towards the N-terminal region of Human MESDC1
Sequence:	AIGGASSQPR KRLVSVCDHC KGKMQLVADL LLLSSEARPV LFEGPASSGA
Predicted Reactivity:	Cow: 93%, Dog: 79%, Horse: 93%, Human: 100%, Mouse: 93%, Rat: 93%
Characteristics:	This is a rabbit polyclonal antibody against MESDC1. It was validated on Western Blot.
Purification:	Affinity Purified

Target Details

Target:	MESDC1
Alternative Name:	MESDC1 (MESDC1 Products)

Target Details

Background: The function of this protein remains unknown.
Alias Symbols: MGC99595
Protein Interaction Partner: ELAVL1, LRP6,
Protein Size: 362

Molecular Weight: 40 kDa

Gene ID: 59274

NCBI Accession: [NM_022566](#), [NP_072088](#)

UniProt: [Q9H1K6](#)

Application Details

Application Notes: Optimal working dilutions should be determined experimentally by the investigator.

Comment: Antigen size: 362 AA

Restrictions: For Research Use only

Handling

Format: Liquid

Concentration: Lot specific

Buffer: Liquid. Purified antibody supplied in 1x PBS buffer with 0.09 % (w/v) sodium azide and 2 % sucrose.

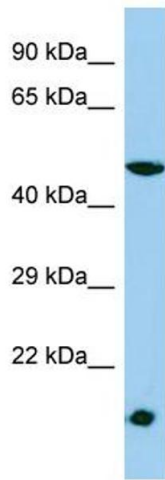
Preservative: Sodium azide

Precaution of Use: This product contains Sodium azide: a POISONOUS AND HAZARDOUS SUBSTANCE which should be handled by trained staff only.

Handling Advice: Avoid repeated freeze-thaw cycles.

Storage: -20 °C

Storage Comment: For short term use, store at 2-8°C up to 1 week. For long term storage, store at -20°C in small aliquots to prevent freeze-thaw cycles.



Western Blotting

Image 1. Host: Rabbit Target Name: MESDC1 Sample Type: HepG2 Whole Cell lysates Antibody Dilution: 1.0ug/ml