



[Go to Product page](#)

Datasheet for ABIN2790818
anti-MRPL32 antibody (C-Term)

1 Image

Overview

Quantity:	100 µL
Target:	MRPL32
Binding Specificity:	C-Term
Reactivity:	Human, Mouse, Sheep, Pig, Rabbit, Rat, Cow, Dog, Guinea Pig, Horse
Host:	Rabbit
Clonality:	Polyclonal
Conjugate:	This MRPL32 antibody is un-conjugated
Application:	Western Blotting (WB)

Product Details

Immunogen:	The immunogen is a synthetic peptide directed towards the C-terminal region of Human MRPL32
Sequence:	CYEKVCKETA EIRRQIGKQE GGPFKAPTIE TVVLYTGETP SEQDQGKRII
Predicted Reactivity:	Cow: 92%, Dog: 86%, Guinea Pig: 93%, Horse: 79%, Human: 100%, Mouse: 86%, Pig: 100%, Rabbit: 93%, Rat: 86%, Sheep: 92%
Characteristics:	This is a rabbit polyclonal antibody against MRPL32. It was validated on Western Blot.
Purification:	Affinity Purified

Target Details

Target:	MRPL32
---------	--------

Target Details

Alternative Name: [MRPL32 \(MRPL32 Products\)](#)

Background: Mammalian mitochondrial ribosomal proteins are encoded by nuclear genes and help in protein synthesis within the mitochondrion. Mitochondrial ribosomes (mitoribosomes) consist of a small 28S subunit and a large 39S subunit. They have an estimated 75 % protein to rRNA composition compared to prokaryotic ribosomes, where this ratio is reversed. Another difference between mammalian mitoribosomes and prokaryotic ribosomes is that the latter contain a 5S rRNA. Among different species, the proteins comprising the mitoribosome differ greatly in sequence, and sometimes in biochemical properties, which prevents easy recognition by sequence homology. This gene encodes a 39S subunit protein that belongs to the L32 ribosomal protein family. A pseudogene corresponding to this gene is found on chromosome Xp.

Alias Symbols: L32mt, MRP-L32, bMRP-59b

Protein Interaction Partner: ILF3, MRPL21, MRPL55, MRPL52, MRPL45, MRPL57, MRPL44, MRPL9, MRPL11, MRPL38, MRPL40, MRPS9, MRPS26, ERGIC1, DDX28, TSR1, MRPL50, MRPL39, MRPL37, MRPL15, MRPL42, MRPS28, SCFD1, MRPL28, TIMM17B, FUBP1, MPV17, ICT1,

Protein Size: 188

Molecular Weight: 21 kDa

Gene ID: 64983

NCBI Accession: [NM_031903](#), [NP_114109](#)

UniProt: [Q9BYC8](#)

Application Details

Application Notes: Optimal working dilutions should be determined experimentally by the investigator.

Comment: Antigen size: 188 AA

Restrictions: For Research Use only

Handling

Format: Liquid

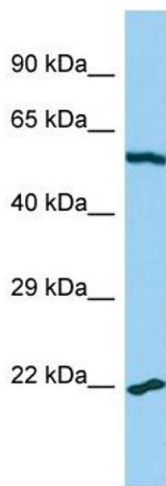
Concentration: Lot specific

Buffer: Liquid. Purified antibody supplied in 1x PBS buffer with 0.09 % (w/v) sodium azide and 2 % sucrose.

Handling

Preservative:	Sodium azide
Precaution of Use:	This product contains Sodium azide: a POISONOUS AND HAZARDOUS SUBSTANCE which should be handled by trained staff only.
Handling Advice:	Avoid repeated freeze-thaw cycles.
Storage:	-20 °C
Storage Comment:	For short term use, store at 2-8°C up to 1 week. For long term storage, store at -20°C in small aliquots to prevent freeze-thaw cycles.

Images



Western Blotting

Image 1. Host: Rabbit Target Name: MRPL32 Sample Type: U937 Whole Cell lysates Antibody Dilution: 1.0ug/ml