

Datasheet for ABIN2790820

**anti-MS4A6E antibody (Middle Region)**[Go to Product page](#)**1** Image

## Overview

|                      |                                       |
|----------------------|---------------------------------------|
| Quantity:            | 100 µL                                |
| Target:              | MS4A6E                                |
| Binding Specificity: | Middle Region                         |
| Reactivity:          | Human                                 |
| Host:                | Rabbit                                |
| Clonality:           | Polyclonal                            |
| Conjugate:           | This MS4A6E antibody is un-conjugated |
| Application:         | Western Blotting (WB)                 |

## Product Details

|                       |   |
|-----------------------|---|
| Immunogen:            | The immunogen is a synthetic peptide directed towards the middle region of Human MS4A6E |
| Sequence:             | FILLSVNPAA LNPASLQCKL DEKDIPTRLL LSYDYHSPYT MDCHRAKASL                                  |
| Predicted Reactivity: | Human: 100%   |
| Characteristics:      | This is a rabbit polyclonal antibody against MS4A6E. It was validated on Western Blot.  |
| Purification:         | Affinity Purified   |

## Target Details

|                   |   |
|-------------------|---|
| Target:           | MS4A6E  |
| Alternative Name: | MS4A6E ( <a href="#">MS4A6E Products</a> )  |
| Background:       | This gene encodes a member of the membrane-spanning 4A gene family. Members of this |

## Target Details

nascent protein family are characterized by common structural features and similar intron/exon splice boundaries and display unique expression patterns among hematopoietic cells and nonlymphoid tissues. The gene encoding this protein is localized to 11q12.3, among a cluster of family members.

Protein Size: 147

Molecular Weight: 16 kDa

Gene ID: 245802

NCBI Accession: [NM\\_139249](#), [NP\\_640342](#)

UniProt: [Q96DS6](#)

## Application Details

Application Notes: Optimal working dilutions should be determined experimentally by the investigator.

Comment: Antigen size: 147 AA

Restrictions: For Research Use only

## Handling

Format: Liquid

Concentration: Lot specific

Buffer: Liquid. Purified antibody supplied in 1x PBS buffer with 0.09 % (w/v) sodium azide and 2 % sucrose.

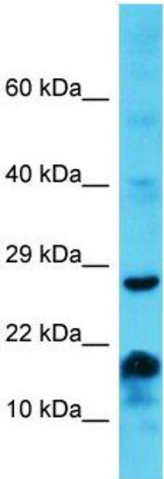
Preservative: Sodium azide

Precaution of Use: This product contains Sodium azide: a POISONOUS AND HAZARDOUS SUBSTANCE which should be handled by trained staff only.

Handling Advice: Avoid repeated freeze-thaw cycles.

Storage: -20 °C

Storage Comment: For short term use, store at 2-8°C up to 1 week. For long term storage, store at -20°C in small aliquots to prevent freeze-thaw cycles.



Western Blotting

**Image 1.** Host: Rabbit Target Name: MS4A6E Sample Type: Jurkat Whole Cell lysates Antibody Dilution: 1.0ug/ml