

Datasheet for ABIN2790822

**anti-MTMR10 antibody (C-Term)**[Go to Product page](#)**1** Image

## Overview

Quantity:	100 µL
Target:	MTMR10
Binding Specificity:	C-Term
Reactivity:	Human, Guinea Pig, Horse, Mouse
Host:	Rabbit
Clonality:	Polyclonal
Conjugate:	This MTMR10 antibody is un-conjugated
Application:	Western Blotting (WB)

## Product Details

Immunogen:	The immunogen is a synthetic peptide directed towards the C-terminal region of Human MTMR10
Sequence:	PRRNSLILKP KPDPAQQTDS QNSDTEQYFR EWFSKPANLH GVILPRVSGT
Predicted Reactivity:	Guinea Pig: 79%, Horse: 77%, Human: 100%, Mouse: 77%
Characteristics:	This is a rabbit polyclonal antibody against MTMR10. It was validated on Western Blot.
Purification:	Affinity Purified

## Target Details

Target:	MTMR10
Alternative Name:	MTMR10 ( <a href="#">MTMR10 Products</a> )

## Target Details

Background: MTMR10 is a probable pseudophosphatase. It contains a Glu residue instead of a conserved Cys residue in the dsPTPase catalytic loop which renders it catalytically inactive as a phosphatase.

Alias Symbols: -

Protein Interaction Partner: MEOX2, UBC, SMAD9, SMAD5,

Protein Size: 777

Molecular Weight: 88 kDa

Gene ID: 54893

NCBI Accession: [NM\\_017762](#), [NP\\_060232](#)

UniProt: [Q9NXD2](#)

## Application Details

Restrictions: For Research Use only

## Handling

Format: Liquid

Concentration: 1 mg/mL

Buffer: Liquid. Purified antibody supplied in 1x PBS buffer with 0.09 % (w/v) sodium azide and 2 % sucrose.

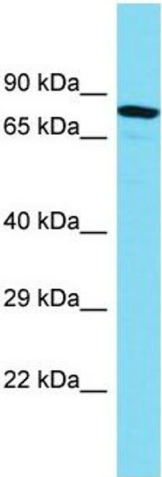
Preservative: Sodium azide

Precaution of Use: This product contains Sodium azide: a POISONOUS AND HAZARDOUS SUBSTANCE which should be handled by trained staff only.

Handling Advice: Avoid repeat freeze-thaw cycles.

Storage: -20 °C

Storage Comment: For short term use, store at 2-8°C up to 1 week. For long term storage, store at -20°C in small aliquots to prevent freeze-thaw cycles.



**Western Blotting**

**Image 1.**