



[Go to Product page](#)

Datasheet for ABIN2790831
anti-OR1A2 antibody (C-Term)

1 Image

Overview

Quantity:	100 µL
Target:	OR1A2
Binding Specificity:	C-Term
Reactivity:	Human, Pig, Rabbit, Rat, Cow, Dog, Horse, Mouse
Host:	Rabbit
Clonality:	Polyclonal
Conjugate:	This OR1A2 antibody is un-conjugated
Application:	Western Blotting (WB)

Product Details

Immunogen:	The immunogen is a synthetic peptide directed towards the C-terminal region of Human OR1A2
Sequence:	YGTTMGMYFR PLTSYSPKDA VITVMYVAVT PALNPFYISL RNWDMKAALQ
Predicted Reactivity:	Cow: 100%, Dog: 86%, Horse: 93%, Human: 100%, Mouse: 100%, Pig: 93%, Rabbit: 93%, Rat: 91%
Characteristics:	This is a rabbit polyclonal antibody against OR1A2. It was validated on Western Blot.
Purification:	Affinity Purified

Target Details

Target:	OR1A2
Alternative Name:	OR1A2 (OR1A2 Products)
Background:	Olfactory receptors interact with odorant molecules in the nose, to initiate a neuronal response

Target Details

that triggers the perception of a smell. The olfactory receptor proteins are members of a large family of G-protein-coupled receptors (GPCR) arising from single coding-exon genes. Olfactory receptors share a 7-transmembrane domain structure with many neurotransmitter and hormone receptors and are responsible for the recognition and G protein-mediated transduction of odorant signals. The olfactory receptor gene family is the largest in the genome. The nomenclature assigned to the olfactory receptor genes and proteins for this organism is independent of other organisms.

Alias Symbols: MGC119930, MGC119931, OR17-6

Protein Size: 309

Molecular Weight:	34 kDa
Gene ID:	26189
NCBI Accession:	NM_012352 , NP_036484
UniProt:	Q9Y585

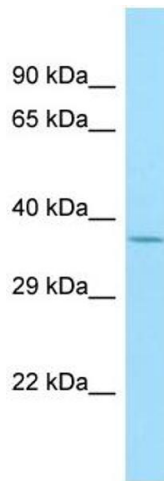
Application Details

Application Notes:	Optimal working dilutions should be determined experimentally by the investigator.
Comment:	Antigen size: 309 AA
Restrictions:	For Research Use only

Handling

Format:	Liquid
Concentration:	Lot specific
Buffer:	Liquid. Purified antibody supplied in 1x PBS buffer with 0.09 % (w/v) sodium azide and 2 % sucrose.
Preservative:	Sodium azide
Precaution of Use:	This product contains Sodium azide: a POISONOUS AND HAZARDOUS SUBSTANCE which should be handled by trained staff only.
Handling Advice:	Avoid repeated freeze-thaw cycles.
Storage:	-20 °C
Storage Comment:	For short term use, store at 2-8°C up to 1 week. For long term storage, store at -20°C in small

aliquots to prevent freeze-thaw cycles.



Western Blotting

Image 1. Host: Rabbit Target Name: OR1A2 Sample Type: MCF7 Whole Cell lysates Antibody Dilution: 1.0ug/ml