

Datasheet for ABIN2790837  
**anti-OSGEPL1 antibody (C-Term)**[Go to Product page](#)

## 1 Image

## Overview

Quantity:	100 µL
Target:	OSGEPL1
Binding Specificity:	C-Term
Reactivity:	Human, Mouse, Rat, Pig, Rabbit, Cow, Dog, Guinea Pig, Zebrafish (Danio rerio)
Host:	Rabbit
Clonality:	Polyclonal
Conjugate:	This OSGEPL1 antibody is un-conjugated
Application:	Western Blotting (WB)

## Product Details

Immunogen:	The immunogen is a synthetic peptide directed towards the C-terminal region of Human OSGEPL1
Sequence:	IKPPLHHAKN CDFSFTGLQH VTDKIIMKKE KEEGIEKGQI LSSAADIAAT
Predicted Reactivity:	Cow: 79%, Dog: 92%, Guinea Pig: 83%, Human: 100%, Mouse: 100%, Pig: 93%, Rabbit: 100%, Rat: 100%, Zebrafish: 83%
Characteristics:	This is a rabbit polyclonal antibody against OSGEPL1. It was validated on Western Blot.
Purification:	Affinity Purified

## Target Details

Target:	OSGEPL1
---------	---------

## Target Details

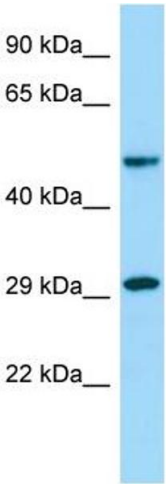
Alternative Name:	OSGEPL1 ( <a href="#">OSGEPL1 Products</a> )
Background:	OSGEPL1 is required for the formation of a threonylcarbamoyl group on adenosine at position 37 (t6A37) in tRNAs that read codons beginning with adenine. Alias Symbols: Qri7 Protein Size: 439
Molecular Weight:	48 kDa
Gene ID:	64172
NCBI Accession:	<a href="#">NM_022353</a> , <a href="#">NP_071748</a>

## Application Details

Application Notes:	Optimal working dilutions should be determined experimentally by the investigator.
Comment:	Antigen size: 439 AA
Restrictions:	For Research Use only

## Handling

Format:	Liquid
Concentration:	Lot specific
Buffer:	Liquid. Purified antibody supplied in 1x PBS buffer with 0.09 % (w/v) sodium azide and 2 % sucrose.
Preservative:	Sodium azide
Precaution of Use:	This product contains Sodium azide: a POISONOUS AND HAZARDOUS SUBSTANCE which should be handled by trained staff only.
Handling Advice:	Avoid repeated freeze-thaw cycles.
Storage:	-20 °C
Storage Comment:	For short term use, store at 2-8°C up to 1 week. For long term storage, store at -20°C in small aliquots to prevent freeze-thaw cycles.



Western Blotting

**Image 1.** Host: Rabbit Target Name: OSGEPL1 Sample Type: MCF7 Whole Cell lysates Antibody Dilution: 1.0ug/ml