



[Go to Product page](#)

Datasheet for ABIN2790839

anti-PAQR7 antibody (C-Term)

1 Image

Overview

Quantity:	100 µL
Target:	PAQR7
Binding Specificity:	C-Term
Reactivity:	Human, Mouse, Guinea Pig, Horse, Rat
Host:	Rabbit
Clonality:	Polyclonal
Conjugate:	This PAQR7 antibody is un-conjugated
Application:	Western Blotting (WB)

Product Details

Immunogen:	The immunogen is a synthetic peptide directed towards the C-terminal region of Human PAQR7
Sequence:	YEARRPIYEP LHTHWPHNFS GLFLLTVGSS ILTAFLLSQL VQRKLDQKTK
Predicted Reactivity:	Guinea Pig: 79%, Horse: 85%, Human: 100%, Mouse: 86%, Rat: 86%
Characteristics:	This is a rabbit polyclonal antibody against PAQR7. It was validated on Western Blot.
Purification:	Affinity Purified

Target Details

Target:	PAQR7
Alternative Name:	PAQR7 (PAQR7 Products)
Background:	PAQR7 is a steroid membrane receptor. It binds progesterone in vitro and may be involved in

Target Details

oocyte maturation.

Alias Symbols: MPRA, PGLP, mSR

Protein Interaction Partner: UBC, ELAVL1,

Protein Size: 346

Molecular Weight: 38 kDa

Gene ID: 164091

NCBI Accession: [NM_178422](#), [NP_848509](#)

UniProt: [Q86WK9](#)

Application Details

Application Notes: Optimal working dilutions should be determined experimentally by the investigator.

Comment: Antigen size: 346 AA

Restrictions: For Research Use only

Handling

Format: Liquid

Concentration: Lot specific

Buffer: Liquid. Purified antibody supplied in 1x PBS buffer with 0.09 % (w/v) sodium azide and 2 % sucrose.

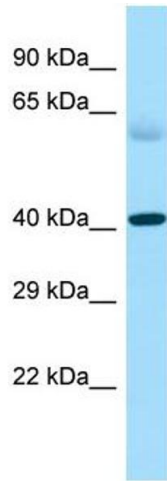
Preservative: Sodium azide

Precaution of Use: This product contains Sodium azide: a POISONOUS AND HAZARDOUS SUBSTANCE which should be handled by trained staff only.

Handling Advice: Avoid repeated freeze-thaw cycles.

Storage: -20 °C

Storage Comment: For short term use, store at 2-8°C up to 1 week. For long term storage, store at -20°C in small aliquots to prevent freeze-thaw cycles.



Western Blotting

Image 1. Host: Rabbit Target Name: PAQR7 Sample Type: Fetal Heart lysates Antibody Dilution: 1.0ug/ml