

Datasheet for ABIN2790844
anti-PGPEP1 antibody (N-Term)[Go to Product page](#)

1 Image

Overview

Quantity:	100 µL
Target:	PGPEP1
Binding Specificity:	N-Term
Reactivity:	Mouse, Human, Rat, Horse, Rabbit, Dog, Guinea Pig, Cow, Zebrafish (Danio rerio)
Host:	Rabbit
Clonality:	Polyclonal
Conjugate:	This PGPEP1 antibody is un-conjugated
Application:	Western Blotting (WB)

Product Details

Immunogen:	The immunogen is a synthetic peptide directed towards the N-terminal region of Human PGPEP1
Sequence:	KHSPQLVVHV GVSGMATTVT LEKCGHNKGY KGLDNCRFCP GSQCCVEDGP
Predicted Reactivity:	Cow: 100%, Dog: 100%, Guinea Pig: 100%, Horse: 100%, Human: 100%, Mouse: 100%, Rabbit: 100%, Rat: 100%, Zebrafish: 83%
Characteristics:	This is a rabbit polyclonal antibody against PGPEP1. It was validated on Western Blot.
Purification:	Affinity Purified

Target Details

Target:	PGPEP1
---------	--------

Target Details

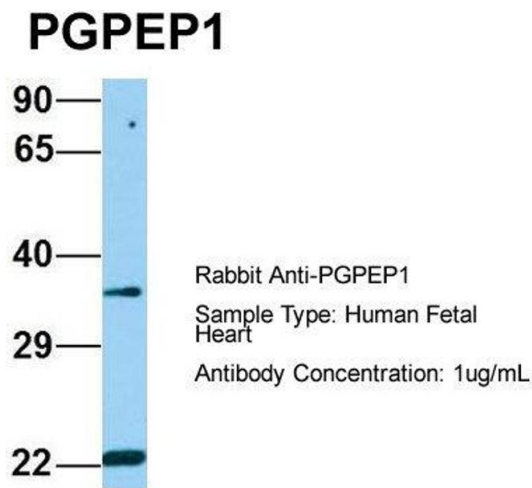
Alternative Name:	PGPEP1 (PGPEP1 Products)
Background:	<p>Pyroglutamyl peptidase I catalyzes the hydrolysis of N-terminal pyroglutamyl residues from oligopeptides and proteins.</p> <p>Alias Symbols: FLJ20208, MGC10812, PGP, PGP-I, PGPI, Pcp</p> <p>Protein Size: 209</p>
Molecular Weight:	23 kDa
Gene ID:	54858
NCBI Accession:	NM_017712 , NP_060182
UniProt:	Q9NXJ5

Application Details

Application Notes:	Optimal working dilutions should be determined experimentally by the investigator.
Comment:	Antigen size: 209 AA
Restrictions:	For Research Use only

Handling

Format:	Liquid
Concentration:	Lot specific
Buffer:	Liquid. Purified antibody supplied in 1x PBS buffer with 0.09 % (w/v) sodium azide and 2 % sucrose.
Preservative:	Sodium azide
Precaution of Use:	This product contains Sodium azide: a POISONOUS AND HAZARDOUS SUBSTANCE which should be handled by trained staff only.
Handling Advice:	Avoid repeated freeze-thaw cycles.
Storage:	-20 °C
Storage Comment:	For short term use, store at 2-8°C up to 1 week. For long term storage, store at -20°C in small aliquots to prevent freeze-thaw cycles.



Western Blotting
Image 1. Host: Rabbit
Target Name: PGPEP1
Sample Tissue: Human Fetal Heart
Antibody Dilution: 1.0 µg/mL