



[Go to Product page](#)

Datasheet for ABIN2790849  
**anti-PPP1R12C antibody (Middle Region)**

1 Image

Overview

Quantity:	100 µL
Target:	PPP1R12C
Binding Specificity:	Middle Region
Reactivity:	Human
Host:	Rabbit
Clonality:	Polyclonal
Conjugate:	This PPP1R12C antibody is un-conjugated
Application:	Western Blotting (WB)

Product Details

Immunogen:	The immunogen is a synthetic peptide directed towards the middle region of Human PPP1R12C
Sequence:	AEKAAGKAPE SEKPAQSLDP SRRPRVPGVE NSDSPAQRAE APDGQGGPGPQ
Predicted Reactivity:	Human: 100%
Characteristics:	This is a rabbit polyclonal antibody against PPP1R12C. It was validated on Western Blot.
Purification:	Affinity Purified

Target Details

Target:	PPP1R12C
Alternative Name:	PPP1R12C ( <a href="#">PPP1R12C Products</a> )

## Target Details

---

Background:	PPP1R12C regulates myosin phosphatase activity. Alias Symbols: DKFZp434D0412, LENG3, MBS85, p84 Protein Interaction Partner: RBM17, C1orf109, PPP1R12C, NUA1, SMAD3, ATXN7, CACNA1A, Cep72, MPRIP, PPP1CB, CDC42BPA, IL16, PAFAH1B2, MYL2, Protein Size: 782
Molecular Weight:	85 kDa
Gene ID:	54776
NCBI Accession:	<a href="#">NM_017607</a> , <a href="#">NP_060077</a>
UniProt:	<a href="#">Q9BZL4</a>

## Application Details

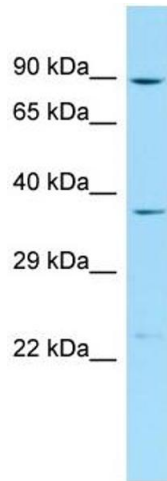
---

Application Notes:	Optimal working dilutions should be determined experimentally by the investigator.
Comment:	Antigen size: 782 AA
Restrictions:	For Research Use only

## Handling

---

Format:	Liquid
Concentration:	Lot specific
Buffer:	Liquid. Purified antibody supplied in 1x PBS buffer with 0.09 % (w/v) sodium azide and 2 % sucrose.
Preservative:	Sodium azide
Precaution of Use:	This product contains Sodium azide: a POISONOUS AND HAZARDOUS SUBSTANCE which should be handled by trained staff only.
Handling Advice:	Avoid repeated freeze-thaw cycles.
Storage:	-20 °C
Storage Comment:	For short term use, store at 2-8°C up to 1 week. For long term storage, store at -20°C in small aliquots to prevent freeze-thaw cycles.



### Western Blotting

**Image 1.** Host: Rabbit Target Name: PPP1R12C Sample Type: Placenta lysates Antibody Dilution: 1.0ug/ml