

Datasheet for ABIN2790850
anti-PRSS33 antibody (C-Term)[Go to Product page](#)

1 Image

Overview

Quantity:	100 µL
Target:	PRSS33
Binding Specificity:	C-Term
Reactivity:	Human, Mouse, Rat, Cow, Dog, Guinea Pig, Horse, Rabbit
Host:	Rabbit
Clonality:	Polyclonal
Conjugate:	This PRSS33 antibody is un-conjugated
Application:	Western Blotting (WB)

Product Details

Immunogen:	The immunogen is a synthetic peptide directed towards the C-terminal region of Human PRSS33
Sequence:	GYPQGHKDAC QGDSGGPLTC LQSGSWVLVG VVSWGKGCAL PNRPGVYTSV
Predicted Reactivity:	Cow: 92%, Dog: 92%, Guinea Pig: 92%, Horse: 92%, Human: 100%, Mouse: 100%, Rabbit: 92%, Rat: 100%
Characteristics:	This is a rabbit polyclonal antibody against PRSS33. It was validated on Western Blot.
Purification:	Affinity Purified

Target Details

Target:	PRSS33
---------	--------

Target Details

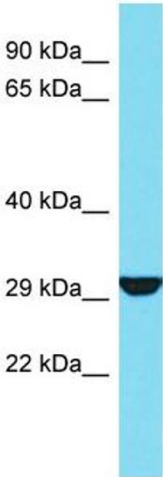
Alternative Name:	PRSS33 (PRSS33 Products)
Background:	<p>PRSS33 is a Serine protease that has amidolytic activity, cleaving its substrates before Arg residues.</p> <p>Alias Symbols: EOS</p> <p>Protein Interaction Partner: APP,</p> <p>Protein Size: 284</p>
Molecular Weight:	31 kDa
Gene ID:	260429
NCBI Accession:	NM_152891 , NP_690851

Application Details

Application Notes:	Optimal working dilutions should be determined experimentally by the investigator.
Comment:	Antigen size: 284 AA
Restrictions:	For Research Use only

Handling

Format:	Liquid
Concentration:	Lot specific
Buffer:	Liquid. Purified antibody supplied in 1x PBS buffer with 0.09 % (w/v) sodium azide and 2 % sucrose.
Preservative:	Sodium azide
Precaution of Use:	This product contains Sodium azide: a POISONOUS AND HAZARDOUS SUBSTANCE which should be handled by trained staff only.
Handling Advice:	Avoid repeated freeze-thaw cycles.
Storage:	-20 °C
Storage Comment:	For short term use, store at 2-8°C up to 1 week. For long term storage, store at -20°C in small aliquots to prevent freeze-thaw cycles.



Western Blotting

Image 1. Host: Rabbit Target Name: PRSS33 Sample Type: 721_B Whole Cell lysates Antibody Dilution: 1.0ug/ml