

Datasheet for ABIN2790852
anti-PSMG2 antibody (C-Term)[Go to Product page](#)

1 Image

Overview

Quantity:	100 µL
Target:	PSMG2
Binding Specificity:	C-Term
Reactivity:	Human, Mouse, Rat, Cow, Goat, Guinea Pig, Rabbit, Sheep, Dog, Horse, Pig
Host:	Rabbit
Clonality:	Polyclonal
Conjugate:	This PSMG2 antibody is un-conjugated
Application:	Western Blotting (WB)

Product Details

Immunogen:	The immunogen is a synthetic peptide directed towards the C-terminal region of Human PSMG2
Sequence:	PSMQKSVQNK IKSLNWEEME KSRCIPEIDD SEFCIRIPGG GITKTLYDES
Predicted Reactivity:	Cow: 86%, Dog: 93%, Goat: 86%, Guinea Pig: 79%, Horse: 93%, Human: 100%, Mouse: 93%, Pig: 93%, Rabbit: 86%, Rat: 93%, Sheep: 79%
Characteristics:	This is a rabbit polyclonal antibody against PSMG2. It was validated on Western Blot.
Purification:	Affinity Purified

Target Details

Target:	PSMG2
---------	-------

Target Details

Alternative Name:	PSMG2 (PSMG2 Products)
Background:	<p>PSMG2 is a chaperone protein which promotes assembly of the 20S proteasome as part of a heterodimer with PSMG1. The PSMG1-PSMG2 heterodimer binds to the PSMA5 and PSMA7 proteasome subunits, promotes assembly of the proteasome alpha subunits into the heteroheptameric alpha ring and prevents alpha ring dimerization.</p> <p>Alias Symbols: CLAST3, HCCA3, HsT1707, MDS003, PAC2, TNFSF5IP1</p> <p>Protein Interaction Partner: NOTCH2NL, TCF4, KRT31, SHFM1, PSMG1, PSMA6, PSMG3, UBC, FN1, THOP1, POMP, PSMA4, PSMA2, SLC35F6,</p> <p>Protein Size: 264</p>
Molecular Weight:	29 kDa
Gene ID:	56984
NCBI Accession:	NM_020232 , NP_064617
UniProt:	Q969U7
Pathways:	Monocarboxylic Acid Catabolic Process

Application Details

Application Notes:	Optimal working dilutions should be determined experimentally by the investigator.
Comment:	Antigen size: 264 AA
Restrictions:	For Research Use only

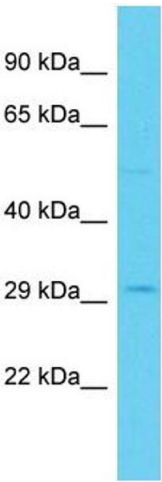
Handling

Format:	Liquid
Concentration:	Lot specific
Buffer:	Liquid. Purified antibody supplied in 1x PBS buffer with 0.09 % (w/v) sodium azide and 2 % sucrose.
Preservative:	Sodium azide
Precaution of Use:	This product contains Sodium azide: a POISONOUS AND HAZARDOUS SUBSTANCE which should be handled by trained staff only.
Handling Advice:	Avoid repeated freeze-thaw cycles.
Storage:	-20 °C

Handling

Storage Comment: For short term use, store at 2-8°C up to 1 week. For long term storage, store at -20°C in small aliquots to prevent freeze-thaw cycles.

Images



Western Blotting

Image 1. Host: Rabbit Target Name: PSMG2 Sample Type: HT1080 Whole Cell lysates Antibody Dilution: 1.0ug/ml