

Datasheet for ABIN2790853
anti-PTCD1 antibody (N-Term)



[Go to Product page](#)

2 Images

Overview

Quantity:	100 µL
Target:	PTCD1
Binding Specificity:	N-Term
Reactivity:	Human
Host:	Rabbit
Clonality:	Polyclonal
Conjugate:	This PTCD1 antibody is un-conjugated
Application:	Western Blotting (WB)

Product Details

Immunogen:	The immunogen is a synthetic peptide directed towards the N-terminal region of Human PTCD1
Sequence:	SQLPLGQERQ ENTGSLGSDP SHSNSTATQE EEEEEESFG TLSDKYSSRR
Predicted Reactivity:	Human: 100%
Characteristics:	This is a rabbit polyclonal antibody against PTCD1. It was validated on Western Blot.
Purification:	Affinity Purified

Target Details

Target:	PTCD1
Alternative Name:	PTCD1 (PTCD1 Products)
Background:	The function of this protein remains unknown.

Target Details

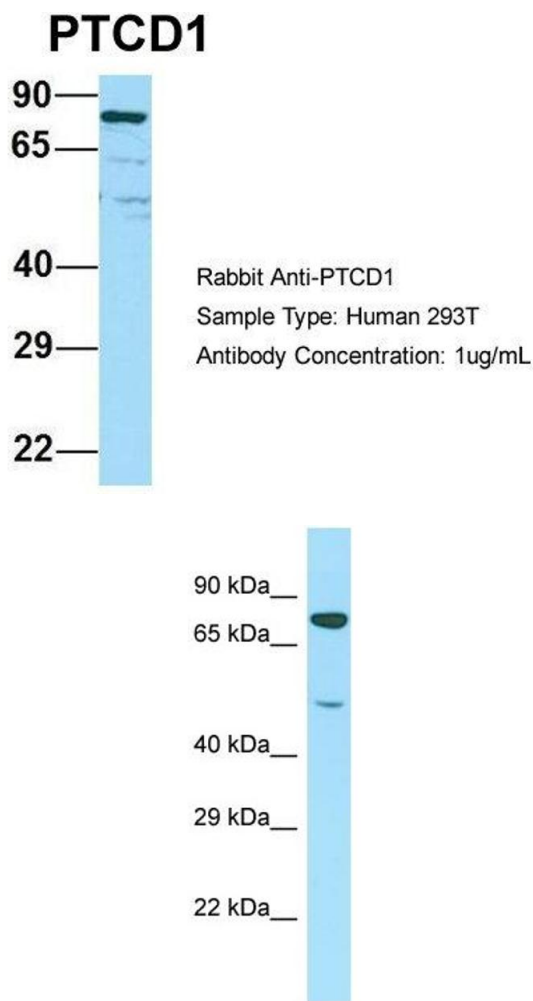
	Alias Symbols: KIAA0632
	Protein Interaction Partner: LIN28B, LIN28A, NNT, ILF3, HNRNPU, HNRNPA1, UBC, ICT1, Protein Size: 700
Molecular Weight:	77 kDa
Gene ID:	26024
NCBI Accession:	NM_015545 , NP_056360
UniProt:	O75127

Application Details

Application Notes:	Optimal working dilutions should be determined experimentally by the investigator.
Comment:	Antigen size: 700 AA
Restrictions:	For Research Use only

Handling

Format:	Liquid
Concentration:	Lot specific
Buffer:	Liquid. Purified antibody supplied in 1x PBS buffer with 0.09 % (w/v) sodium azide and 2 % sucrose.
Preservative:	Sodium azide
Precaution of Use:	This product contains Sodium azide: a POISONOUS AND HAZARDOUS SUBSTANCE which should be handled by trained staff only.
Handling Advice:	Avoid repeated freeze-thaw cycles.
Storage:	-20 °C
Storage Comment:	For short term use, store at 2-8°C up to 1 week. For long term storage, store at -20°C in small aliquots to prevent freeze-thaw cycles.



Western Blotting

Image 1. Host: Rabbit Target Name: PTCD1 Sample Type: Human 293T Antibody Dilution: 1.0ug/ml PTCD1 is supported by BioGPS gene expression data to be expressed in HEK293T

Western Blotting

Image 2. Host: Rabbit Target Name: PTCD1 Sample Type: Jurkat Whole Cell lysates Antibody Dilution: 1.0ug/ml