



[Go to Product page](#)

Datasheet for ABIN2790854
anti-PTCD2 antibody (N-Term)

1 Image

Overview

Quantity:	100 µL
Target:	PTCD2
Binding Specificity:	N-Term
Reactivity:	Human, Mouse, Rat, Rabbit, Guinea Pig
Host:	Rabbit
Clonality:	Polyclonal
Conjugate:	This PTCD2 antibody is un-conjugated
Application:	Western Blotting (WB)

Product Details

Immunogen:	The immunogen is a synthetic peptide directed towards the N-terminal region of Human PTCD2
Sequence:	AVACNLSGTK ETYFRNLKKK LTQNKLILKG ELITLLHLCE SRDHVELAKN
Predicted Reactivity:	Guinea Pig: 90%, Human: 100%, Mouse: 90%, Rabbit: 100%, Rat: 91%
Characteristics:	This is a rabbit polyclonal antibody against PTCD2. It was validated on Western Blot.
Purification:	Affinity Purified

Target Details

Target:	PTCD2
Alternative Name:	PTCD2 (PTCD2 Products)
Background:	PTCD2 is involved in mitochondrial RNA maturation and mitochondrial respiratory chain

Target Details

function.

Alias Symbols: -

Protein Interaction Partner: TRIM32, MID2, UBC,

Protein Size: 388

Molecular Weight: 43 kDa

Gene ID: 79810

NCBI Accession: [NM_024754, NP_079030](#)

UniProt: [Q8WV60](#)

Application Details

Application Notes: Optimal working dilution should be determined by the investigator.

Restrictions: For Research Use only

Handling

Format: Liquid

Concentration: 1 mg/mL

Buffer: Liquid. Purified antibody supplied in 1x PBS buffer with 0.09 % (w/v) sodium azide and 2 % sucrose.

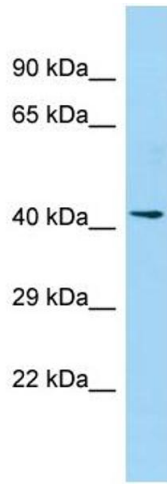
Preservative: Sodium azide

Precaution of Use: This product contains Sodium azide: a POISONOUS AND HAZARDOUS SUBSTANCE which should be handled by trained staff only.

Handling Advice: Avoid repeat freeze-thaw cycles.

Storage: -20 °C

Storage Comment: For short term use, store at 2-8°C up to 1 week. For long term storage, store at -20°C in small aliquots to prevent freeze-thaw cycles.



Western Blotting

Image 1.