

Datasheet for ABIN2790856
anti-RSPH4A antibody (N-Term)



[Go to Product page](#)

1 Image

Overview

Quantity:	100 µL
Target:	RSPH4A
Binding Specificity:	N-Term
Reactivity:	Human
Host:	Rabbit
Clonality:	Polyclonal
Conjugate:	This RSPH4A antibody is un-conjugated
Application:	Western Blotting (WB)

Product Details

Immunogen:	The immunogen is a synthetic peptide directed towards the N-terminal region of Human RSPH4A
Sequence:	APPQSDRTTS VIPEAGTPYP DPLEQSSDKR ESTPHHTSQS EGNTFQQSQQ
Predicted Reactivity:	Human: 100%
Characteristics:	This is a rabbit polyclonal antibody against RSPH4A. It was validated on Western Blot.
Purification:	Affinity Purified

Target Details

Target:	RSPH4A
Alternative Name:	RSPH4A (RSPH4A Products)

Target Details

Background:	<p>This gene encodes a protein that appears to be a component the radial spoke head, as determined by homology to similar proteins in the biflagellate alga <i>Chlamydomonas reinhardtii</i> and other ciliates. Radial spokes, which are regularly spaced along cilia, sperm, and flagella axonemes, consist of a thin 'stalk' and a bulbous 'head' that form a signal transduction scaffold between the central pair of microtubules and dynein. Mutations in this gene cause primary ciliary dyskinesia 1, a disease arising from dysmotility of motile cilia and sperm. Alternative splicing results in multiple transcript variants.</p> <p>Alias Symbols: CILD11, RSHL3, RSPH6B, dJ412I7.1</p> <p>Protein Size: 716</p>
Molecular Weight:	79 kDa
Gene ID:	345895
NCBI Accession:	NM_001010892 , NP_001010892
UniProt:	Q5TD94

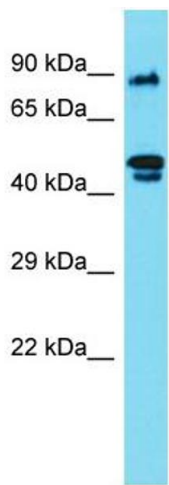
Application Details

Application Notes:	Optimal working dilutions should be determined experimentally by the investigator.
Comment:	Antigen size: 716 AA
Restrictions:	For Research Use only

Handling

Format:	Liquid
Concentration:	Lot specific
Buffer:	Liquid. Purified antibody supplied in 1x PBS buffer with 0.09 % (w/v) sodium azide and 2 % sucrose.
Preservative:	Sodium azide
Precaution of Use:	This product contains Sodium azide: a POISONOUS AND HAZARDOUS SUBSTANCE which should be handled by trained staff only.
Handling Advice:	Avoid repeated freeze-thaw cycles.
Storage:	-20 °C
Storage Comment:	For short term use, store at 2-8°C up to 1 week. For long term storage, store at -20°C in small

aliquots to prevent freeze-thaw cycles.



Western Blotting

Image 1. Host: Rabbit Target Name: RSPH4A Sample Type: 721_B Whole Cell lysates Antibody Dilution: 1.0ug/ml