

Datasheet for ABIN2790857
anti-RSRC1 antibody (N-Term)[Go to Product page](#)

1 Image

Overview

Quantity:	100 µL
Target:	RSRC1
Binding Specificity:	N-Term
Reactivity:	Human, Mouse, Rat, Guinea Pig, Cow, Dog
Host:	Rabbit
Clonality:	Polyclonal
Conjugate:	This RSRC1 antibody is un-conjugated
Application:	Western Blotting (WB)

Product Details

Immunogen:	The immunogen is a synthetic peptide directed towards the N-terminal region of Human RSRC1
Sequence:	SRTYSRKKGG RKSRSKSRSW SRDLQPRSHS YDRRRRHRSS SSSSYGSRRK
Predicted Reactivity:	Cow: 93%, Dog: 93%, Guinea Pig: 100%, Human: 100%, Mouse: 86%, Rat: 86%
Characteristics:	This is a rabbit polyclonal antibody against RSRC1. It was validated on Western Blot.
Purification:	Affinity Purified

Target Details

Target:	RSRC1
Alternative Name:	RSRC1 (RSRC1 Products)
Background:	Serine- and arginine-rich (SR) proteins and SR-related proteins, like RSRC1, function in

Target Details

spliceosome assembly and participate in multiple steps of mRNA splicing.

Alias Symbols: SFRS21, SRp53

Protein Interaction Partner: UBC, BMI1, JMJD6, SRPK2, SRPK1, Prpf8, Snw1, ACTR3B, UTP14A, LSM2, GDF9, EEF1A1,

Protein Size: 334

Molecular Weight: 37 kDa

Gene ID: 51319

NCBI Accession: [NM_016625](#), [NP_057709](#)

UniProt: [Q96IZ7](#)

Application Details

Application Notes: Optimal working dilutions should be determined experimentally by the investigator.

Comment: Antigen size: 334 AA

Restrictions: For Research Use only

Handling

Format: Liquid

Concentration: Lot specific

Buffer: Liquid. Purified antibody supplied in 1x PBS buffer with 0.09 % (w/v) sodium azide and 2 % sucrose.

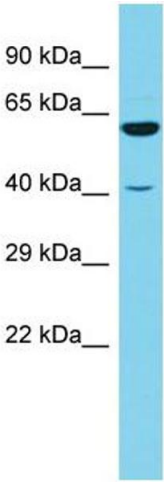
Preservative: Sodium azide

Precaution of Use: This product contains Sodium azide: a POISONOUS AND HAZARDOUS SUBSTANCE which should be handled by trained staff only.

Handling Advice: Avoid repeated freeze-thaw cycles.

Storage: -20 °C

Storage Comment: For short term use, store at 2-8°C up to 1 week. For long term storage, store at -20°C in small aliquots to prevent freeze-thaw cycles.



Western Blotting

Image 1. Host: Rabbit Target Name: RSRC1 Sample Type: 721_B Whole Cell lysates Antibody Dilution: 1.0ug/ml
RSRC1 is supported by BioGPS gene expression data to be expressed in 721_B