

Datasheet for ABIN2790862
anti-SGCZ antibody (C-Term)[Go to Product page](#)

1 Image

Overview

| | |
|----------------------|---|
| Quantity: | 100 µL |
| Target: | SGCZ |
| Binding Specificity: | C-Term |
| Reactivity: | Human, Rabbit, Rat, Dog, Guinea Pig, Horse, Mouse |
| Host: | Rabbit |
| Clonality: | Polyclonal |
| Conjugate: | This SGCZ antibody is un-conjugated |
| Application: | Western Blotting (WB) |

Product Details

| | |
|-----------------------|---|
| Immunogen: | The immunogen is a synthetic peptide directed towards the C-terminal region of Human SGCZ |
| Sequence: | EPSQDLRLLES PTRSLIMEAP RGVQVSAAAG DFKATCRKEL HLQSTEGEIF |
| Predicted Reactivity: | Dog: 100%, Guinea Pig: 100%, Horse: 100%, Human: 100%, Mouse: 100%, Rabbit: 100%, Rat: 100% |
| Characteristics: | This is a rabbit polyclonal antibody against SGCZ. It was validated on Western Blot. |
| Purification: | Affinity Purified |

Target Details

| | |
|-------------------|--|
| Target: | SGCZ |
| Alternative Name: | SGCZ (SGCZ Products) |

Target Details

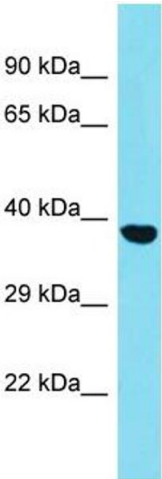
| | |
|-------------------|--|
| Background: | <p>The zeta-sarcoglycan gene measures over 465 kb and localizes to 8p22. This protein is part of the sarcoglycan complex, a group of 6 proteins. The sarcoglycans are all N-glycosylated transmembrane proteins with a short intra-cellular domain, a single transmembrane region and a large extra-cellular domain containing a carboxyl-terminal cluster with several conserved cysteine residues. The sarcoglycan complex is part of the dystrophin-associated glycoprotein complex (DGC), which bridges the inner cytoskeleton and the extra-cellular matrix.</p> <p>Alias Symbols: ZSG1</p> <p>Protein Interaction Partner: SGCB, DMD,</p> <p>Protein Size: 312</p> |
| Molecular Weight: | 34 kDa |
| Gene ID: | 137868 |
| NCBI Accession: | NM_139167 , NP_631906 |

Application Details

| | |
|--------------------|--|
| Application Notes: | Optimal working dilutions should be determined experimentally by the investigator. |
| Comment: | Antigen size: 312 AA |
| Restrictions: | For Research Use only |

Handling

| | |
|--------------------|---|
| Format: | Liquid |
| Concentration: | Lot specific |
| Buffer: | Liquid. Purified antibody supplied in 1x PBS buffer with 0.09 % (w/v) sodium azide and 2 % sucrose. |
| Preservative: | Sodium azide |
| Precaution of Use: | This product contains Sodium azide: a POISONOUS AND HAZARDOUS SUBSTANCE which should be handled by trained staff only. |
| Handling Advice: | Avoid repeated freeze-thaw cycles. |
| Storage: | -20 °C |
| Storage Comment: | For short term use, store at 2-8°C up to 1 week. For long term storage, store at -20°C in small aliquots to prevent freeze-thaw cycles. |



Western Blotting

Image 1. Host: Rabbit Target Name: SGCZ Sample Type: HepG2 Whole Cell lysates Antibody Dilution: 1.0ug/ml