

Datasheet for ABIN2790870
anti-TAPT1 antibody (C-Term)[Go to Product page](#)

1 Image

Overview

Quantity:	100 µL
Target:	TAPT1
Binding Specificity:	C-Term
Reactivity:	Human, Mouse, Dog, Guinea Pig, Rat, Cow, Horse
Host:	Rabbit
Clonality:	Polyclonal
Conjugate:	This TAPT1 antibody is un-conjugated
Application:	Western Blotting (WB)

Product Details

Immunogen:	The immunogen is a synthetic peptide directed towards the C-terminal region of Human TAPT1
Sequence:	KEAKMEEKLS NPPATCTPGK PSSKSQNKCK PSQGLSTEEN LSASITKQPI
Predicted Reactivity:	Cow: 93%, Dog: 86%, Guinea Pig: 79%, Horse: 93%, Human: 100%, Mouse: 86%, Rat: 79%
Characteristics:	This is a rabbit polyclonal antibody against TAPT1. It was validated on Western Blot.
Purification:	Affinity Purified

Target Details

Target:	TAPT1
Alternative Name:	TAPT1 (TAPT1 Products)
Background:	This gene encodes a highly conserved, putative transmembrane protein. A mutation in the

Target Details

mouse ortholog of this gene results in homeotic, posterior-to-anterior transformations of the axial skeleton which are similar to the phenotype of mouse homeobox C8 gene mutants. This gene is proposed to function downstream of homeobox C8 to transduce extracellular patterning information during axial skeleton development. An alternatively spliced transcript variant encoding a substantially different isoform has been described, but its biological validity has not been determined.

Alias Symbols: CMVFR

Protein Interaction Partner: UBC,

Protein Size: 562

Molecular Weight: 62 kDa

Gene ID: 202018

NCBI Accession: [NM_153365](#), [NP_699196](#)

Pathways: [SARS-CoV-2 Protein Interactome](#)

Application Details

Application Notes: Optimal working dilutions should be determined experimentally by the investigator.

Comment: Antigen size: 562 AA

Restrictions: For Research Use only

Handling

Format: Liquid

Concentration: Lot specific

Buffer: Liquid. Purified antibody supplied in 1x PBS buffer with 0.09 % (w/v) sodium azide and 2 % sucrose.

Preservative: Sodium azide

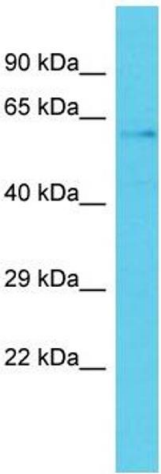
Precaution of Use: This product contains Sodium azide: a POISONOUS AND HAZARDOUS SUBSTANCE which should be handled by trained staff only.

Handling Advice: Avoid repeated freeze-thaw cycles.

Storage: -20 °C

Storage Comment: For short term use, store at 2-8°C up to 1 week. For long term storage, store at -20°C in small

aliquots to prevent freeze-thaw cycles.



Western Blotting

Image 1. Host: Rabbit Target Name: TAPT1 Sample Type: RPMI-8226 Whole Cell lysates Antibody Dilution: 1.0ug/ml
TAPT1 is strongly supported by BioGPS gene expression data to be expressed in RPMI-8226