

Datasheet for ABIN2790879
anti-TTLL10 antibody (N-Term)[Go to Product page](#)

1 Image

Overview

Quantity:	100 µL
Target:	TTLL10
Binding Specificity:	N-Term
Reactivity:	Human, Rat, Saccharomyces cerevisiae, Cow, Dog, Guinea Pig, Horse
Host:	Rabbit
Clonality:	Polyclonal
Conjugate:	This TTLL10 antibody is un-conjugated
Application:	Western Blotting (WB)

Product Details

Immunogen:	The immunogen is a synthetic peptide directed towards the N-terminal region of Human TTLL10
Sequence:	ATIISYCKS KGWQRIHDSR RDDYTLKWCE VKSRDSYGSF REGEQLLYQL
Predicted Reactivity:	Cow: 79%, Dog: 79%, Guinea Pig: 79%, Horse: 79%, Human: 100%, Rat: 77%, Yeast: 100%
Characteristics:	This is a rabbit polyclonal antibody against TTLL10. It was validated on Western Blot.
Purification:	Affinity Purified

Target Details

Target:	TTLL10
Alternative Name:	TTLL10 (TTLL10 Products)

Target Details

Background:	TTLL10 inactive polyglycyclase. Protein Interaction Partner: TRIP6, KRT40, CEP70, THAP1, RBPMS, PNMA2, CADPS, TRIM27, MDFI, FHL3, Protein Size: 600
-------------	---

Molecular Weight:	66 kDa
-------------------	--------

Gene ID:	254173
----------	--------

Application Details

Application Notes:	Optimal working dilution should be determined by the investigator.
--------------------	--

Restrictions:	For Research Use only
---------------	-----------------------

Handling

Format:	Liquid
---------	--------

Concentration:	1 mg/mL
----------------	---------

Buffer:	Liquid. Purified antibody supplied in 1x PBS buffer with 0.09 % (w/v) sodium azide and 2 % sucrose.
---------	---

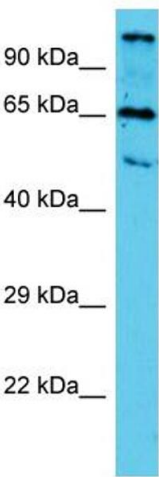
Preservative:	Sodium azide
---------------	--------------

Precaution of Use:	This product contains Sodium azide: a POISONOUS AND HAZARDOUS SUBSTANCE which should be handled by trained staff only.
--------------------	--

Handling Advice:	Avoid repeat freeze-thaw cycles.
------------------	----------------------------------

Storage:	-20 °C
----------	--------

Storage Comment:	For short term use, store at 2-8°C up to 1 week. For long term storage, store at -20°C in small aliquots to prevent freeze-thaw cycles.
------------------	---



Western Blotting

Image 1.