

Datasheet for ABIN2790881
anti-UTP14C antibody (C-Term)[Go to Product page](#)

1 Image

Overview

Quantity:	100 µL
Target:	UTP14C
Binding Specificity:	C-Term
Reactivity:	Mouse, Pig, Rabbit, Cow, Rat, Dog, Guinea Pig, Horse, Human
Host:	Rabbit
Clonality:	Polyclonal
Conjugate:	This UTP14C antibody is un-conjugated
Application:	Western Blotting (WB)

Product Details

Immunogen:	The immunogen is a synthetic peptide directed towards the C-terminal region of Human UTP14C
Sequence:	EAFAGDDVIR DFLKEKREAV EASKPKDVDL TLPGWGEWGG VGLKPSAKKR
Predicted Reactivity:	Cow: 100%, Dog: 100%, Guinea Pig: 86%, Horse: 100%, Human: 100%, Mouse: 77%, Pig: 100%, Rabbit: 100%, Rat: 93%
Characteristics:	This is a rabbit polyclonal antibody against UTP14C. It was validated on Western Blot.
Purification:	Affinity Purified

Target Details

Target:	UTP14C
---------	--------

Target Details

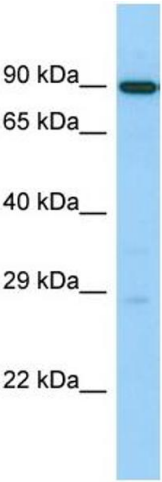
Alternative Name:	UTP14C (UTP14C Products)
Background:	<p>UTP14C is essential for spermatogenesis. It may be required specifically for ribosome biogenesis and hence protein synthesis during male meiosis</p> <p>Alias Symbols: 2700066J21Rik, KIAA0266, UTP14B</p> <p>Protein Interaction Partner: CCDC57, PRICKLE1, KRT40, LZTS2, TRIM54, TEX11, HOOK2, PDE4DIP, GOLGA2,</p> <p>Protein Size: 766</p>
Molecular Weight:	84 kDa
Gene ID:	9724
NCBI Accession:	NM_021645 , NP_067677
UniProt:	Q5TAP6

Application Details

Application Notes:	Optimal working dilutions should be determined experimentally by the investigator.
Comment:	Antigen size: 766 AA
Restrictions:	For Research Use only

Handling

Format:	Liquid
Concentration:	Lot specific
Buffer:	Liquid. Purified antibody supplied in 1x PBS buffer with 0.09 % (w/v) sodium azide and 2 % sucrose.
Preservative:	Sodium azide
Precaution of Use:	This product contains Sodium azide: a POISONOUS AND HAZARDOUS SUBSTANCE which should be handled by trained staff only.
Handling Advice:	Avoid repeated freeze-thaw cycles.
Storage:	-20 °C
Storage Comment:	For short term use, store at 2-8°C up to 1 week. For long term storage, store at -20°C in small aliquots to prevent freeze-thaw cycles.



Western Blotting

Image 1. Host: Rabbit Target Name: UTP14C Sample Type: 721_B Whole Cell lysates Antibody Dilution: 1.0ug/ml
UTP14C is strongly supported by BioGPS gene expression data to be expressed in Human 721_B cells