

Datasheet for ABIN2790885
anti-VWC2 antibody (Middle Region)[Go to Product page](#)

1 Image

Overview

Quantity:	100 µL
Target:	VWC2
Binding Specificity:	Middle Region
Reactivity:	Human, Mouse, Rat, Cow, Guinea Pig, Horse, Dog, Rabbit, Zebrafish (Danio rerio)
Host:	Rabbit
Clonality:	Polyclonal
Conjugate:	This VWC2 antibody is un-conjugated
Application:	Western Blotting (WB)

Product Details

Immunogen:	The immunogen is a synthetic peptide directed towards the middle region of Human VWC2
Sequence:	YVYPDYRGKG CVDESGFVYA IGEKFAPGPS ACPCLCTEEG PLCAQPECPR
Predicted Reactivity:	Cow: 100%, Dog: 100%, Guinea Pig: 100%, Horse: 100%, Human: 100%, Mouse: 100%, Rabbit: 100%, Rat: 100%, Zebrafish: 92%
Characteristics:	This is a rabbit polyclonal antibody against VWC2. It was validated on Western Blot.
Purification:	Affinity Purified

Target Details

Target:	VWC2
Alternative Name:	VWC2 (VWC2 Products)

Target Details

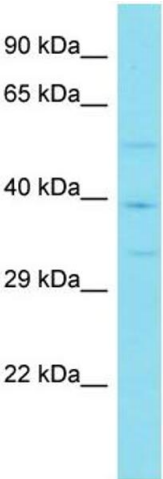
Background:	<p>This gene encodes a secreted bone morphogenic protein antagonist. The encoded protein is possibly involved in neural function and development and may have a role in cell adhesion.</p> <p>Alias Symbols: PSST739, UNQ739</p> <p>Protein Size: 325</p>
Molecular Weight:	36 kDa
Gene ID:	375567
NCBI Accession:	NM_198570 , NP_940972
UniProt:	Q2TAL6

Application Details

Application Notes:	Optimal working dilutions should be determined experimentally by the investigator.
Comment:	Antigen size: 325 AA
Restrictions:	For Research Use only

Handling

Format:	Liquid
Concentration:	Lot specific
Buffer:	Liquid. Purified antibody supplied in 1x PBS buffer with 0.09 % (w/v) sodium azide and 2 % sucrose.
Preservative:	Sodium azide
Precaution of Use:	This product contains Sodium azide: a POISONOUS AND HAZARDOUS SUBSTANCE which should be handled by trained staff only.
Handling Advice:	Avoid repeated freeze-thaw cycles.
Storage:	-20 °C
Storage Comment:	For short term use, store at 2-8°C up to 1 week. For long term storage, store at -20°C in small aliquots to prevent freeze-thaw cycles.



Western Blotting

Image 1. Host: Rabbit Target Name: VWC2 Sample Type: Jurkat Whole Cell lysates Antibody Dilution: 1.0ug/ml