

Datasheet for ABIN2790886
anti-WFIKKN2 antibody (C-Term)[Go to Product page](#)

1 Image

Overview

Quantity:	100 µL
Target:	WFIKKN2
Binding Specificity:	C-Term
Reactivity:	Human, Mouse, Rat, Cow, Dog, Guinea Pig, Horse, Pig, Rabbit, Zebrafish (Danio rerio)
Host:	Rabbit
Clonality:	Polyclonal
Conjugate:	This WFIKKN2 antibody is un-conjugated
Application:	Western Blotting (WB)

Product Details

Immunogen:	The immunogen is a synthetic peptide directed towards the C-terminal region of Rat Wfikkn2
Sequence:	PLIIMGEVEG GMAMLKPSDF VGASSTRVR KLREVMYKKT CDVLKDFLGL
Predicted Reactivity:	Cow: 86%, Dog: 93%, Guinea Pig: 86%, Horse: 93%, Human: 100%, Mouse: 93%, Pig: 93%, Rabbit: 86%, Rat: 93%, Zebrafish: 79%
Characteristics:	This is a rabbit polyclonal antibody against Wfikkn2. It was validated on Western Blot.
Purification:	Affinity Purified

Target Details

Target:	WFIKKN2
Alternative Name:	Wfikkn2 (WFIKKN2 Products)

Target Details

Background: The function of this protein remains unknown.
Alias Symbols: RGD1305361
Protein Size: 571

Molecular Weight: 62 kDa

Gene ID: 287631

NCBI Accession: [XM_220855](#), [XP_220855](#)

UniProt: [D3Z9K5](#)

Application Details

Application Notes: Optimal working dilution should be determined by the investigator.

Restrictions: For Research Use only

Handling

Format: Liquid

Concentration: 1 mg/mL

Buffer: Liquid. Purified antibody supplied in 1x PBS buffer with 0.09 % (w/v) sodium azide and 2 % sucrose.

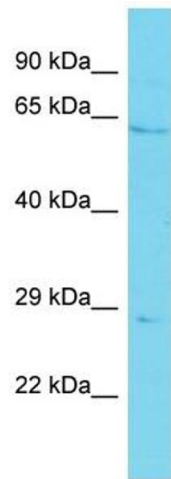
Preservative: Sodium azide

Precaution of Use: This product contains Sodium azide: a POISONOUS AND HAZARDOUS SUBSTANCE which should be handled by trained staff only.

Handling Advice: Avoid repeat freeze-thaw cycles.

Storage: -20 °C

Storage Comment: For short term use, store at 2-8°C up to 1 week. For long term storage, store at -20°C in small aliquots to prevent freeze-thaw cycles.



Western Blotting

Image 1.