

Datasheet for ABIN2790896  
**anti-ABHD14A antibody (Middle Region)**[Go to Product page](#)

## 2 Images

## Overview

Quantity:	100 µL
Target:	ABHD14A
Binding Specificity:	Middle Region
Reactivity:	Human, Mouse, Rat, Horse, Pig, Dog, Guinea Pig
Host:	Rabbit
Clonality:	Polyclonal
Conjugate:	This ABHD14A antibody is un-conjugated
Application:	Western Blotting (WB), Immunohistochemistry (IHC)

## Product Details

Immunogen:	The immunogen is a synthetic peptide directed towards the middle region of Human ABHD14A
Sequence:	DLPGFGNSAP SKEASTEAGR AALLERALRD LEVQNAVLVS PSLSGHYALP
Predicted Reactivity:	Dog: 93%, Guinea Pig: 93%, Horse: 100%, Human: 100%, Mouse: 86%, Pig: 100%, Rat: 86%
Characteristics:	This is a rabbit polyclonal antibody against ABHD14A. It was validated on Western Blot.
Purification:	Affinity Purified

## Target Details

Target:	ABHD14A
Alternative Name:	ABHD14A ( <a href="#">ABHD14A Products</a> )
Background:	ABHD14A play a possible role in granule neuron development.

## Target Details

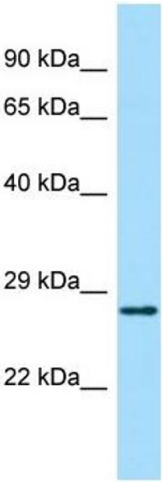
	Alias Symbols: DORZ1
	Protein Interaction Partner: GINS3, BZW2, RAP1GDS1, PPP5C, CTSA, PFAS, PAFAH1B2, EIF6, HSPA9, GSS, ECHS1,
	Protein Size: 271
Molecular Weight:	30 kDa
Gene ID:	25864
NCBI Accession:	<a href="#">NM_015407</a> , <a href="#">NP_056222</a>
UniProt:	<a href="#">Q9BUJ0</a>

## Application Details

Application Notes:	Optimal working dilutions should be determined experimentally by the investigator.
Comment:	Antigen size: 271 AA
Restrictions:	For Research Use only

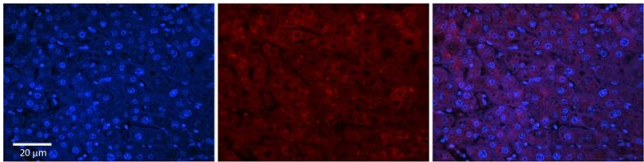
## Handling

Format:	Liquid
Concentration:	Lot specific
Buffer:	Liquid. Purified antibody supplied in 1x PBS buffer with 0.09 % (w/v) sodium azide and 2 % sucrose.
Preservative:	Sodium azide
Precaution of Use:	This product contains Sodium azide: a POISONOUS AND HAZARDOUS SUBSTANCE which should be handled by trained staff only.
Handling Advice:	Avoid repeated freeze-thaw cycles.
Storage:	-20 °C
Storage Comment:	For short term use, store at 2-8°C up to 1 week. For long term storage, store at -20°C in small aliquots to prevent freeze-thaw cycles.



#### Western Blotting

**Image 1.** Host: Rabbit Target Name: ABHD14A Sample Type: Fetal Kidney lysates Antibody Dilution: 1.0ug/ml



#### Immunohistochemistry

**Image 2.** Rabbit Anti-ABHD14A Antibody Catalog Number: ARP67925\_P050 Formalin Fixed Paraffin Embedded Tissue: Human Adult Liver Observed Staining: Cytoplasm in hepatocytes, weak signal, wide tissue distribution Primary Antibody Concentration: 1:100 Secondary Antibody: Donkey anti-Rabbit-Cy3 Secondary Antibody Concentration: 1:200 Magnification: 20X Exposure Time: 0.5 – 2.0 sec Protocol located in Reviews and Data.