



[Go to Product page](#)

Datasheet for ABIN2790905
anti-AKR1B15 antibody (C-Term)

1 Image

Overview

Quantity:	100 µL
Target:	AKR1B15
Binding Specificity:	C-Term
Reactivity:	Rabbit, Rat, Saccharomyces cerevisiae, Cow, Zebrafish (Danio rerio), Dog, Guinea Pig, Human, Mouse
Host:	Rabbit
Clonality:	Polyclonal
Conjugate:	This AKR1B15 antibody is un-conjugated
Application:	Western Blotting (WB)

Product Details

Immunogen:	The immunogen is a synthetic peptide directed towards the C-terminal region of Human AKR1B15
Sequence:	TAYSPLGSPD RPWAKPEDPS LLEDPKIKEI AAKHKKTAAQ VLIRFHIQRN
Predicted Reactivity:	Cow: 92%, Dog: 86%, Guinea Pig: 93%, Human: 100%, Mouse: 93%, Rabbit: 86%, Rat: 100%, Yeast: 79%, Zebrafish: 86%
Characteristics:	This is a rabbit polyclonal antibody against AKR1B15. It was validated on Western Blot.
Purification:	Affinity Purified

Target Details

Target:	AKR1B15
---------	---------

Target Details

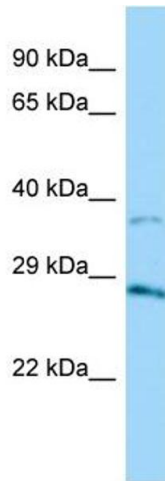
Alternative Name:	AKR1B15 (AKR1B15 Products)
Background:	AKR1B15 possesses weak oxidoreductase activity. Alias Symbols: AKR1B10L Protein Size: 316
Molecular Weight:	36 kDa
Gene ID:	441282
NCBI Accession:	NM_001080538 , NP_001074007

Application Details

Application Notes:	Optimal working dilutions should be determined experimentally by the investigator.
Comment:	Antigen size: 316 AA
Restrictions:	For Research Use only

Handling

Format:	Liquid
Concentration:	Lot specific
Buffer:	Liquid. Purified antibody supplied in 1x PBS buffer with 0.09 % (w/v) sodium azide and 2 % sucrose.
Preservative:	Sodium azide
Precaution of Use:	This product contains Sodium azide: a POISONOUS AND HAZARDOUS SUBSTANCE which should be handled by trained staff only.
Handling Advice:	Avoid repeated freeze-thaw cycles.
Storage:	-20 °C
Storage Comment:	For short term use, store at 2-8°C up to 1 week. For long term storage, store at -20°C in small aliquots to prevent freeze-thaw cycles.



Western Blotting

Image 1. Host: Rabbit Target Name: AKR1B15 Sample Type: HT1080 Whole Cell lysates Antibody Dilution: 1.0ug/ml