

Datasheet for ABIN2790906
anti-AMZ1 antibody (N-Term)[Go to Product page](#)

1 Image

Overview

Quantity:	100 µL
Target:	AMZ1
Binding Specificity:	N-Term
Reactivity:	Human, Mouse, Rat, Pig, Rabbit, Cow, Guinea Pig, Horse, Dog
Host:	Rabbit
Clonality:	Polyclonal
Conjugate:	This AMZ1 antibody is un-conjugated
Application:	Western Blotting (WB)

Product Details

Immunogen:	The immunogen is a synthetic peptide directed towards the N-terminal region of Human AMZ1
Sequence:	LPSVAAASIR CSSRPSRDSD RLQLHTDGIL SFLKNNKPGD ALCVLGLTLS
Predicted Reactivity:	Cow: 79%, Dog: 93%, Guinea Pig: 79%, Horse: 86%, Human: 100%, Mouse: 79%, Pig: 86%, Rabbit: 79%, Rat: 86%
Characteristics:	This is a rabbit polyclonal antibody against AMZ1. It was validated on Western Blot.
Purification:	Affinity Purified

Target Details

Target:	AMZ1
Alternative Name:	AMZ1 (AMZ1 Products)

Target Details

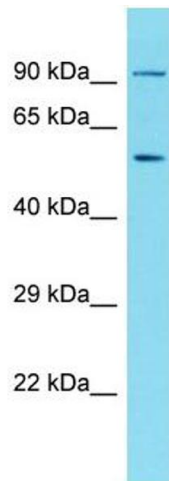
Background:	AMZ1 is a Zinc metalloprotease. It exhibits aminopeptidase activity against neurogranin in vitro and does not hydrolyze angiotensin-2. Alias Symbols: - Protein Size: 498
Molecular Weight:	55 kDa
Gene ID:	155185
NCBI Accession:	NM_133463 , NP_597720
UniProt:	Q400G9

Application Details

Application Notes:	Optimal working dilutions should be determined experimentally by the investigator.
Comment:	Antigen size: 498 AA
Restrictions:	For Research Use only

Handling

Format:	Liquid
Concentration:	Lot specific
Buffer:	Liquid. Purified antibody supplied in 1x PBS buffer with 0.09 % (w/v) sodium azide and 2 % sucrose.
Preservative:	Sodium azide
Precaution of Use:	This product contains Sodium azide: a POISONOUS AND HAZARDOUS SUBSTANCE which should be handled by trained staff only.
Handling Advice:	Avoid repeated freeze-thaw cycles.
Storage:	-20 °C
Storage Comment:	For short term use, store at 2-8°C up to 1 week. For long term storage, store at -20°C in small aliquots to prevent freeze-thaw cycles.



Western Blotting

Image 1. Host: Rabbit Target Name: AMZ1 Sample Type: Jurkat Whole Cell lysates Antibody Dilution: 1.0ug/ml