



[Go to Product page](#)

Datasheet for ABIN2790911  
**anti-ATAD2B antibody (N-Term)**

1 Image

Overview

Quantity:	100 µL
Target:	ATAD2B
Binding Specificity:	N-Term
Reactivity:	Human, Mouse, Rabbit, Cow, Guinea Pig, Dog, Horse
Host:	Rabbit
Clonality:	Polyclonal
Conjugate:	This ATAD2B antibody is un-conjugated
Application:	Western Blotting (WB)

Product Details

Immunogen:	The immunogen is a synthetic peptide directed towards the N-terminal region of Human ATAD2B
Sequence:	PGAGAEPGAT GGSSHFISSR TRSSKTRAAS CPAAKAGGSG GAGVTLDEAR
Predicted Reactivity:	Cow: 100%, Dog: 92%, Guinea Pig: 100%, Horse: 93%, Human: 100%, Mouse: 100%, Rabbit: 100%
Characteristics:	This is a rabbit polyclonal antibody against ATAD2B. It was validated on Western Blot.
Purification:	Affinity Purified

Target Details

Target:	ATAD2B
Alternative Name:	ATAD2B ( <a href="#">ATAD2B Products</a> )

## Target Details

---

Background:	<p>The protein encoded by this gene belongs to the AAA ATPase family, CDC48 subfamily. This subfamily members in eukaryotes are involved in the budding and transfer of membrane from the transitional endoplasmic reticulum to the Golgi apparatus. The exact function of this protein is not known.</p> <p>Alias Symbols: -</p> <p>Protein Interaction Partner: UBC, SIRT7,</p> <p>Protein Size: 1458</p>
Molecular Weight:	165 kDa
Gene ID:	54454
NCBI Accession:	<a href="#">NM_017552</a> , <a href="#">NP_060022</a>
UniProt:	<a href="#">Q9ULI0</a>

## Application Details

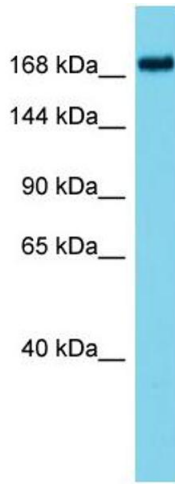
---

Application Notes:	Optimal working dilutions should be determined experimentally by the investigator.
Comment:	Antigen size: 1458 AA
Restrictions:	For Research Use only

## Handling

---

Format:	Liquid
Concentration:	Lot specific
Buffer:	Liquid. Purified antibody supplied in 1x PBS buffer with 0.09 % (w/v) sodium azide and 2 % sucrose.
Preservative:	Sodium azide
Precaution of Use:	This product contains Sodium azide: a POISONOUS AND HAZARDOUS SUBSTANCE which should be handled by trained staff only.
Handling Advice:	Avoid repeated freeze-thaw cycles.
Storage:	-20 °C
Storage Comment:	For short term use, store at 2-8°C up to 1 week. For long term storage, store at -20°C in small aliquots to prevent freeze-thaw cycles.



### Western Blotting

**Image 1.** Host: Rabbit Target Name: ATAD2B Sample Type: HT1080 Whole Cell lysates Antibody Dilution: 1.0ug/ml