

Datasheet for ABIN2790916
anti-BPIFB6 antibody (N-Term)



[Go to Product page](#)

1 Image

Overview

Quantity:	100 µL
Target:	BPIFB6
Binding Specificity:	N-Term
Reactivity:	Human, Rat, Guinea Pig, Horse, Pig, Rabbit
Host:	Rabbit
Clonality:	Polyclonal
Conjugate:	This BPIFB6 antibody is un-conjugated
Application:	Western Blotting (WB)

Product Details

Immunogen:	The immunogen is a synthetic peptide directed towards the N-terminal region of Human BPIFB6
Sequence:	EKMAAEAGKK QPGMKPIKGI TNLKVKDVQL PVITLNFVPG VGIFQCVSTG
Predicted Reactivity:	Guinea Pig: 86%, Horse: 86%, Human: 100%, Pig: 93%, Rabbit: 93%, Rat: 86%
Characteristics:	This is a rabbit polyclonal antibody against BPIFB6. It was validated on Western Blot.
Purification:	Affinity Purified

Target Details

Target:	BPIFB6
Alternative Name:	BPIFB6 (BPIFB6 Products)

Target Details

Background: The function of this protein remains unknown.
Alias Symbols: BPIL3, LPLUNC6
Protein Size: 453

Molecular Weight: 50 kDa

Gene ID: 128859

NCBI Accession: [NM_174897](#), [NP_777557](#)

UniProt: [Q8NFQ5](#)

Application Details

Application Notes: Optimal working dilutions should be determined experimentally by the investigator.

Comment: Antigen size: 453 AA

Restrictions: For Research Use only

Handling

Format: Liquid

Concentration: Lot specific

Buffer: Liquid. Purified antibody supplied in 1x PBS buffer with 0.09 % (w/v) sodium azide and 2 % sucrose.

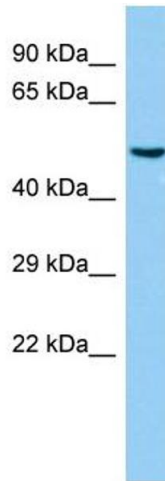
Preservative: Sodium azide

Precaution of Use: This product contains Sodium azide: a POISONOUS AND HAZARDOUS SUBSTANCE which should be handled by trained staff only.

Handling Advice: Avoid repeated freeze-thaw cycles.

Storage: -20 °C

Storage Comment: For short term use, store at 2-8°C up to 1 week. For long term storage, store at -20°C in small aliquots to prevent freeze-thaw cycles.



Western Blotting

Image 1. Host: Rabbit Target Name: BPIFB6 Sample Type: Fetal Lung lysates Antibody Dilution: 1.0ug/ml