

Datasheet for ABIN2790917

**anti-BPIFB6 antibody (Middle Region)**[Go to Product page](#)**1** Image

## Overview

Quantity:	100 µL
Target:	BPIFB6
Binding Specificity:	Middle Region
Reactivity:	Human, Cow
Host:	Rabbit
Clonality:	Polyclonal
Conjugate:	This BPIFB6 antibody is un-conjugated
Application:	Western Blotting (WB)

## Product Details

Immunogen:	The immunogen is a synthetic peptide directed towards the middle region of Human BPIFB6
Sequence:	QLDFSPVVQQ QKGKTIKLAD AGEALTFPEG YAKGSSQLLL PATFLSAELA
Predicted Reactivity:	Cow: 86%, Human: 100%
Characteristics:	This is a rabbit polyclonal antibody against BPIFB6. It was validated on Western Blot.
Purification:	Affinity Purified

## Target Details

Target:	BPIFB6
Alternative Name:	BPIFB6 ( <a href="#">BPIFB6 Products</a> )
Background:	The function of this protein remains unknown.

## Target Details

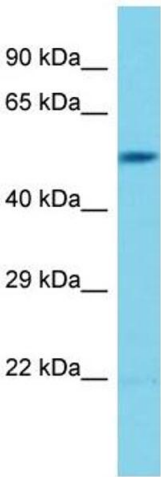
	Alias Symbols: BPIL3, LPLUNC6
	Protein Size: 453
Molecular Weight:	50 kDa
Gene ID:	128859
NCBI Accession:	<a href="#">NM_174897</a> , <a href="#">NP_777557</a>
UniProt:	<a href="#">Q8NFQ5</a>

## Application Details

Application Notes:	Optimal working dilutions should be determined experimentally by the investigator.
Comment:	Antigen size: 453 AA
Restrictions:	For Research Use only

## Handling

Format:	Liquid
Concentration:	Lot specific
Buffer:	Liquid. Purified antibody supplied in 1x PBS buffer with 0.09 % (w/v) sodium azide and 2 % sucrose.
Preservative:	Sodium azide
Precaution of Use:	This product contains Sodium azide: a POISONOUS AND HAZARDOUS SUBSTANCE which should be handled by trained staff only.
Handling Advice:	Avoid repeated freeze-thaw cycles.
Storage:	-20 °C
Storage Comment:	For short term use, store at 2-8°C up to 1 week. For long term storage, store at -20°C in small aliquots to prevent freeze-thaw cycles.



Western Blotting

**Image 1.** Host: Rabbit Target Name: BPIFB6 Sample Type: RPMI-8226 Whole Cell lysates Antibody Dilution: 1.0ug/ml