

Datasheet for ABIN2790926
anti-CMSS1 antibody (N-Term)[Go to Product page](#)

1 Image

Overview

| | |
|----------------------|--------------------------------------|
| Quantity: | 100 µL |
| Target: | CMSS1 |
| Binding Specificity: | N-Term |
| Reactivity: | Human, Mouse, Rat, Dog, Pig, Rabbit |
| Host: | Rabbit |
| Clonality: | Polyclonal |
| Conjugate: | This CMSS1 antibody is un-conjugated |
| Application: | Western Blotting (WB) |

Product Details

| | |
|-----------------------|----------------------------------------------------------------------------------------------|
| Immunogen: | The immunogen is a synthetic peptide directed towards the N-terminal region of Human C3orf26 |
| Sequence: | EASDGEGEDG TEVMQQETVP VPVPSEKTKQ PKECFLIQPK ERKENTTKTR |
| Predicted Reactivity: | Dog: 81%, Human: 100%, Mouse: 79%, Pig: 81%, Rabbit: 81%, Rat: 86% |
| Characteristics: | This is a rabbit polyclonal antibody against C3orf26. It was validated on Western Blot. |
| Purification: | Affinity Purified |

Target Details

| | |
|-------------------|--------------------------------------------|
| Target: | CMSS1 |
| Alternative Name: | C3orf26 (CMSS1 Products) |

Target Details

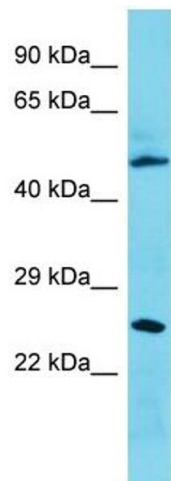
| | |
|-------------------|---------------------------------------------------------------------------------------------------------------------------------------------------------------|
| Background: | The function of this protein remains unknown. Alias Symbols: C3orf26, Protein Interaction Partner: UBC, GYG1, S1PR1, CAND1, SART3, Protein Size: 261 |
| Molecular Weight: | 28 kDa |
| Gene ID: | 84319 |
| NCBI Accession: | NM_001167924 , NP_001161396 |
| UniProt: | B4DUM1 |

Application Details

| | |
|--------------------|------------------------------------------------------------------------------------|
| Application Notes: | Optimal working dilutions should be determined experimentally by the investigator. |
| Comment: | Antigen size: 261 AA |
| Restrictions: | For Research Use only |

Handling

| | |
|--------------------|-----------------------------------------------------------------------------------------------------------------------------------------|
| Format: | Liquid |
| Concentration: | Lot specific |
| Buffer: | Liquid. Purified antibody supplied in 1x PBS buffer with 0.09 % (w/v) sodium azide and 2 % sucrose. |
| Preservative: | Sodium azide |
| Precaution of Use: | This product contains Sodium azide: a POISONOUS AND HAZARDOUS SUBSTANCE which should be handled by trained staff only. |
| Handling Advice: | Avoid repeated freeze-thaw cycles. |
| Storage: | -20 °C |
| Storage Comment: | For short term use, store at 2-8°C up to 1 week. For long term storage, store at -20°C in small aliquots to prevent freeze-thaw cycles. |



Western Blotting

Image 1. Host: Rabbit Target Name: C3orf26 Sample Type: 721_B Whole Cell lysates Antibody Dilution: 1.0ug/ml