

Datasheet for ABIN2790930

## anti-C6orf129 antibody (Middle Region)



[Go to Product page](#)

### 1 Image

#### Overview

Quantity:	100 µL
Target:	C6orf129 (CCDC167)
Binding Specificity:	Middle Region
Reactivity:	Human, Mouse, Cow, Dog, Guinea Pig, Horse, Pig, Rabbit, Rat
Host:	Rabbit
Clonality:	Polyclonal
Conjugate:	This C6orf129 antibody is un-conjugated
Application:	Western Blotting (WB)

#### Product Details

Immunogen:	The immunogen is a synthetic peptide directed towards the middle region of Mouse 1110021J02Rik
Sequence:	MTKKKRENLG VAQEIDGLEE KLSRCRKDLE AVTSQLYRAE LSPEDRRSLE
Predicted Reactivity:	Cow: 86%, Dog: 93%, Guinea Pig: 86%, Horse: 93%, Human: 100%, Mouse: 92%, Pig: 93%, Rabbit: 100%, Rat: 92%
Characteristics:	This is a rabbit polyclonal antibody against 1110021J02Rik. It was validated on Western Blot.
Purification:	Affinity Purified

#### Target Details

Target:	C6orf129 (CCDC167)
---------	--------------------

### Target Details

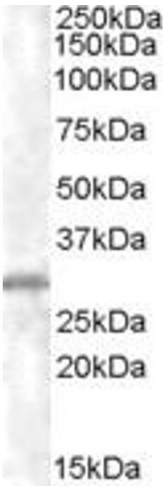
Alternative Name:	1110021J02Rik ( <a href="#">CCDC167 Products</a> )
Background:	The function of this protein remains unknown. Alias Symbols: Ccdc167, 1110021J02Rik Protein Size: 101
Molecular Weight:	11 kDa
Gene ID:	68597
NCBI Accession:	<a href="#">NM_001163741</a> , <a href="#">NP_001157213</a>
UniProt:	<a href="#">Q9D162</a>

### Application Details

Restrictions:	For Research Use only
---------------	-----------------------

### Handling

Format:	Liquid
Concentration:	1 mg/mL
Buffer:	Liquid. Purified antibody supplied in 1x PBS buffer with 0.09 % (w/v) sodium azide and 2 % sucrose.
Preservative:	Sodium azide
Precaution of Use:	This product contains Sodium azide: a POISONOUS AND HAZARDOUS SUBSTANCE which should be handled by trained staff only.
Handling Advice:	Avoid repeat freeze-thaw cycles.
Storage:	-20 °C
Storage Comment:	For short term use, store at 2-8°C up to 1 week. For long term storage, store at -20°C in small aliquots to prevent freeze-thaw cycles.



**Western Blotting**

**Image 1.**