

Datasheet for ABIN2790931

anti-C6orf204 antibody (C-Term)



[Go to Product page](#)

1 Image

Overview

Quantity:	100 µL
Target:	C6orf204 (CEP85L)
Binding Specificity:	C-Term
Reactivity:	Human, Mouse, Pig, Rabbit, Cow, Dog, Horse, Rat, Saccharomyces cerevisiae, Guinea Pig
Host:	Rabbit
Clonality:	Polyclonal
Conjugate:	This C6orf204 antibody is un-conjugated
Application:	Western Blotting (WB)

Product Details

Immunogen:	The immunogen is a synthetic peptide directed towards the C-terminal region of Human CEP85L
Sequence:	QGEFEQKLAS TEKEVLQLNE FLKQRLSLFS EEKKKLEEKV GFSNKVELGQ
Predicted Reactivity:	Cow: 100%, Dog: 100%, Guinea Pig: 82%, Horse: 100%, Human: 100%, Mouse: 100%, Pig: 91%, Rabbit: 91%, Rat: 100%, Yeast: 83%
Characteristics:	This is a rabbit polyclonal antibody against CEP85L. It was validated on Western Blot.
Purification:	Affinity Purified

Target Details

Target:	C6orf204 (CEP85L)
---------	-------------------

Target Details

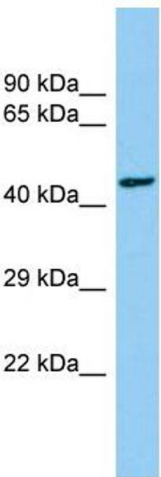
Alternative Name:	CEP85L (CEP85L Products)
Background:	<p>The protein encoded by this gene was identified as a breast cancer antigen. Nothing more is known of its function at this time. Three transcript variants encoding different isoforms have been found for this gene.</p> <p>Alias Symbols: C6orf204, NY-BR-15, bA57K17.2</p> <p>Protein Interaction Partner: ITSN1, UBC, MARK2,</p> <p>Protein Size: 394</p>
Molecular Weight:	43 kDa
Gene ID:	387119
NCBI Accession:	NM_206921 , NP_996804

Application Details

Application Notes:	Optimal working dilutions should be determined experimentally by the investigator.
Comment:	Antigen size: 394 AA
Restrictions:	For Research Use only

Handling

Format:	Liquid
Concentration:	Lot specific
Buffer:	Liquid. Purified antibody supplied in 1x PBS buffer with 0.09 % (w/v) sodium azide and 2 % sucrose.
Preservative:	Sodium azide
Precaution of Use:	This product contains Sodium azide: a POISONOUS AND HAZARDOUS SUBSTANCE which should be handled by trained staff only.
Handling Advice:	Avoid repeated freeze-thaw cycles.
Storage:	-20 °C
Storage Comment:	For short term use, store at 2-8°C up to 1 week. For long term storage, store at -20°C in small aliquots to prevent freeze-thaw cycles.



Western Blotting

Image 1. Host: Rabbit Target Name: CEP85L Sample Type: Hela Whole cell lysates Antibody Dilution: 1.0ug/ml