



[Go to Product page](#)

Datasheet for ABIN2790940

## anti-OPAL1 antibody (C-Term)

### 1 Image

#### Overview

Quantity:	100 µL
Target:	OPAL1 (WBP1L)
Binding Specificity:	C-Term
Reactivity:	Human, Guinea Pig, Rabbit, Rat, Zebrafish (Danio rerio)
Host:	Rabbit
Clonality:	Polyclonal
Conjugate:	This OPAL1 antibody is un-conjugated
Application:	Western Blotting (WB)

#### Product Details

Immunogen:	The immunogen is a synthetic peptide directed towards the C-terminal region of Human WBP1L
Sequence:	GSVAGLGELD PGAFLDKDAE CRELLKDDS SEHGAPDSKE KTPGRHRRFT
Predicted Reactivity:	Guinea Pig: 81%, Human: 100%, Rabbit: 75%, Rat: 75%, Zebrafish: 90%
Characteristics:	This is a rabbit polyclonal antibody against WBP1L. It was validated on Western Blot.
Purification:	Affinity Purified

#### Target Details

Target:	OPAL1 (WBP1L)
Alternative Name:	WBP1L ( <a href="#">WBP1L Products</a> )

## Target Details

---

Background: The function of this protein remains unknown.  
Alias Symbols: C10orf26, OPA1L, OPAL1  
Protein Interaction Partner: SGTA, LIG4, UBC,  
Protein Size: 342

---

Molecular Weight: 38 kDa

---

Gene ID: 54838

---

NCBI Accession: [NM\\_017787](#), [NP\\_060257](#)

---

UniProt: [Q9NX94](#)

---

## Application Details

---

Application Notes: Optimal working dilutions should be determined experimentally by the investigator.

---

Comment: Antigen size: 342 AA

---

Restrictions: For Research Use only

---

## Handling

---

Format: Liquid

---

Concentration: Lot specific

---

Buffer: Liquid. Purified antibody supplied in 1x PBS buffer with 0.09 % (w/v) sodium azide and 2 % sucrose.

---

Preservative: Sodium azide

---

Precaution of Use: This product contains Sodium azide: a POISONOUS AND HAZARDOUS SUBSTANCE which should be handled by trained staff only.

---

Handling Advice: Avoid repeated freeze-thaw cycles.

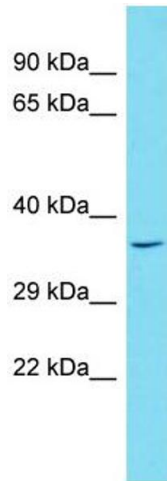
---

Storage: -20 °C

---

Storage Comment: For short term use, store at 2-8°C up to 1 week. For long term storage, store at -20°C in small aliquots to prevent freeze-thaw cycles.

---



### Western Blotting

**Image 1.** Host: Rabbit Target Name: WBP1L Sample Type: HeLa Whole Cell lysates Antibody Dilution: 1.0ug/ml WBP1L is supported by BioGPS gene expression data to be expressed in HeLa