



[Go to Product page](#)

Datasheet for ABIN2790942
anti-C10ORF90 antibody (C-Term)

1 Image

Overview

Quantity:	100 µL
Target:	C10ORF90
Binding Specificity:	C-Term
Reactivity:	Human, Guinea Pig, Mouse, Rat
Host:	Rabbit
Clonality:	Polyclonal
Conjugate:	This C10ORF90 antibody is un-conjugated
Application:	Western Blotting (WB)

Product Details

Immunogen:	The immunogen is a synthetic peptide directed towards the C-terminal region of Human C10orf90
Sequence:	QDVCASLQED NGVQIESKFP KGDYTCCDLV VKIKECKKSE DPTTPEPSA
Predicted Reactivity:	Guinea Pig: 85%, Human: 100%, Mouse: 79%, Rat: 86%
Characteristics:	This is a rabbit polyclonal antibody against C10orf90. It was validated on Western Blot.
Purification:	Affinity Purified

Target Details

Target:	C10ORF90
Alternative Name:	C10orf90 (C10ORF90 Products)

Target Details

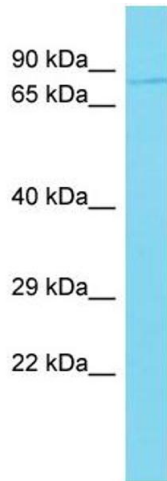
Background:	<p>C10orf90 is a tumor suppressor that is required to sustain G2/M checkpoint after DNA damage. It mediates CDKN1A/p21 protein stability in a ubiquitin-independent manner. It may have a role in the assembly of primary cilia.</p> <p>Alias Symbols: FATS, bA422P15.2</p> <p>Protein Interaction Partner: TP53, UBC,</p> <p>Protein Size: 699</p>
Molecular Weight:	77 kDa
Gene ID:	118611
NCBI Accession:	NM_001004298 , NP_001004298
UniProt:	Q96M02

Application Details

Application Notes:	Optimal working dilutions should be determined experimentally by the investigator.
Comment:	Antigen size: 699 AA
Restrictions:	For Research Use only

Handling

Format:	Liquid
Concentration:	Lot specific
Buffer:	Liquid. Purified antibody supplied in 1x PBS buffer with 0.09 % (w/v) sodium azide and 2 % sucrose.
Preservative:	Sodium azide
Precaution of Use:	This product contains Sodium azide: a POISONOUS AND HAZARDOUS SUBSTANCE which should be handled by trained staff only.
Handling Advice:	Avoid repeated freeze-thaw cycles.
Storage:	-20 °C
Storage Comment:	For short term use, store at 2-8°C up to 1 week. For long term storage, store at -20°C in small aliquots to prevent freeze-thaw cycles.



Western Blotting

Image 1. Host: Rabbit Target Name: C10orf90 Sample Type: 721_B Whole Cell lysates Antibody Dilution: 1.0ug/ml