



[Go to Product page](#)

Datasheet for ABIN2790944

anti-C11orf48 antibody (C-Term)

1 Image

Overview

Quantity:	100 µL
Target:	C11orf48 (C11ORF48)
Binding Specificity:	C-Term
Reactivity:	Human
Host:	Rabbit
Clonality:	Polyclonal
Conjugate:	This C11orf48 antibody is un-conjugated
Application:	Western Blotting (WB)

Product Details

Immunogen:	The immunogen is a synthetic peptide directed towards the C-terminal region of Human C11orf48
Sequence:	RPRADHAAPP QEAGVQCTCQ HYTVREEAQK TPPADPACPE REDSHGSGSP
Predicted Reactivity:	Human: 100%
Characteristics:	This is a rabbit polyclonal antibody against C11orf48. It was validated on Western Blot.
Purification:	Affinity Purified

Target Details

Target:	C11orf48 (C11ORF48)
Alternative Name:	C11orf48 (C11ORF48 Products)

Target Details

Background: The function of this protein remains unknown.
Alias Symbols: -
Protein Interaction Partner: UBC,
Protein Size: 263

Molecular Weight: 29 kDa

Gene ID: 79081

NCBI Accession: [NM_024099](#), [NP_077004](#)

Application Details

Application Notes: Optimal working dilutions should be determined experimentally by the investigator.

Comment: Antigen size: 263 AA

Restrictions: For Research Use only

Handling

Format: Liquid

Concentration: Lot specific

Buffer: Liquid. Purified antibody supplied in 1x PBS buffer with 0.09 % (w/v) sodium azide and 2 % sucrose.

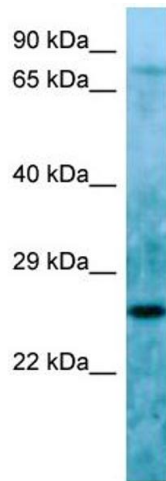
Preservative: Sodium azide

Precaution of Use: This product contains Sodium azide: a POISONOUS AND HAZARDOUS SUBSTANCE which should be handled by trained staff only.

Handling Advice: Avoid repeated freeze-thaw cycles.

Storage: -20 °C

Storage Comment: For short term use, store at 2-8°C up to 1 week. For long term storage, store at -20°C in small aliquots to prevent freeze-thaw cycles.



Western Blotting

Image 1. Host: Rabbit Target Name: C11orf48 Sample Type: HepG2 Whole Cell lysates Antibody Dilution: 1.0ug/ml