

Datasheet for ABIN2790945  
**anti-ANAPC15 antibody (N-Term)**[Go to Product page](#)

## 1 Image

## Overview

Quantity:	100 µL
Target:	ANAPC15
Binding Specificity:	N-Term
Reactivity:	Human, Mouse, Rat, Cow, Dog, Horse, Pig, Rabbit, Saccharomyces cerevisiae, Zebrafish (Danio rerio)
Host:	Rabbit
Clonality:	Polyclonal
Conjugate:	This ANAPC15 antibody is un-conjugated
Application:	Western Blotting (WB)

## Product Details

Immunogen:	The immunogen is a synthetic peptide directed towards the N-terminal region of Human ANAPC15
Sequence:	EETELQQQEQ QHQAWLQSLA EKDNLLVPIG KPASEHYDDE EEEDDEDDED
Predicted Reactivity:	Cow: 100%, Dog: 100%, Horse: 100%, Human: 100%, Mouse: 100%, Pig: 100%, Rabbit: 100%, Rat: 100%, Yeast: 82%, Zebrafish: 90%
Characteristics:	This is a rabbit polyclonal antibody against ANAPC15. It was validated on Western Blot.
Purification:	Affinity Purified

## Target Details

Target:	ANAPC15
---------	---------

## Target Details

Alternative Name:	ANAPC15 ( <a href="#">ANAPC15 Products</a> )
Background:	<p>ANAPC15 is a component of the anaphase promoting complex/cyclosome (APC/C), a cell cycle-regulated E3 ubiquitin ligase that controls progression through mitosis and the G1 phase of the cell cycle. In the complex, it plays a role in the release of the mitotic checkpoint complex (MCC) from the APC/C: not required for APC/C activity itself, but promotes the turnover of CDC20 and MCC on the APC/C, thereby participating to the responsiveness of the spindle assembly checkpoint. It is also required for degradation of CDC20.</p> <p>Alias Symbols: APC15, C11orf51</p> <p>Protein Interaction Partner: ANAPC4, CDC26, ANAPC1, ANAPC7, ANAPC5, ANAPC2, ANAPC10, CDC16, CDC23, CDC27, CDC20,</p> <p>Protein Size: 121</p>
Molecular Weight:	13 kDa
Gene ID:	25906
NCBI Accession:	<a href="#">NM_014042</a> , <a href="#">NP_054761</a>
UniProt:	<a href="#">P60006</a>

## Application Details

Application Notes:	Optimal working dilutions should be determined experimentally by the investigator.
Comment:	Antigen size: 121 AA
Restrictions:	For Research Use only

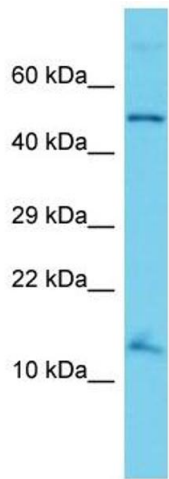
## Handling

Format:	Liquid
Concentration:	Lot specific
Buffer:	Liquid. Purified antibody supplied in 1x PBS buffer with 0.09 % (w/v) sodium azide and 2 % sucrose.
Preservative:	Sodium azide
Precaution of Use:	This product contains Sodium azide: a POISONOUS AND HAZARDOUS SUBSTANCE which should be handled by trained staff only.
Handling Advice:	Avoid repeated freeze-thaw cycles.

Handling

Storage:	-20 °C
Storage Comment:	For short term use, store at 2-8°C up to 1 week. For long term storage, store at -20°C in small aliquots to prevent freeze-thaw cycles.

Images



Western Blotting

**Image 1.** Host: Rabbit Target Name: ANAPC15 Sample Type: HT1080 Whole Cell lysates Antibody Dilution: 1.0ug/ml