



[Go to Product page](#)

Datasheet for ABIN2790951
anti-ELMSAN1 antibody (C-Term)

1 Image

Overview

Quantity:	100 µL
Target:	ELMSAN1
Binding Specificity:	C-Term
Reactivity:	Human, Dog, Cow, Guinea Pig, Horse, Mouse, Pig, Rabbit, Rat
Host:	Rabbit
Clonality:	Polyclonal
Conjugate:	This ELMSAN1 antibody is un-conjugated
Application:	Western Blotting (WB)

Product Details

Immunogen:	The immunogen is a synthetic peptide directed towards the C-terminal region of Human C14orf43
Sequence:	NAPGSAGGQA SEKPREGTGK SRRALPFSEK KKKTETFSKT QNQENTFPCK
Predicted Reactivity:	Cow: 93%, Dog: 93%, Guinea Pig: 86%, Horse: 79%, Human: 100%, Mouse: 85%, Pig: 92%, Rabbit: 85%, Rat: 93%
Characteristics:	This is a rabbit polyclonal antibody against C14orf43. It was validated on Western Blot.
Purification:	Affinity Purified

Target Details

Target:	ELMSAN1
---------	---------

Target Details

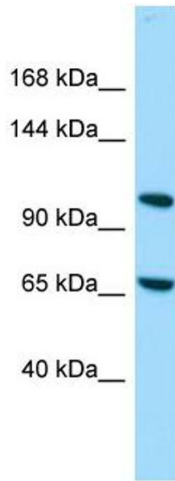
Alternative Name:	C14orf43 (ELMSAN1 Products)
Background:	The function of this protein remains unknown. Alias Symbols: C14orf117, LSR68, c14_5541, C14orf43 Protein Interaction Partner: RPA3, RPA2, RPA1, HDAC2, HDAC1, DNTTIP1, UBC, ESR1, CDV3, PDLIM5, TFAP4, SH3KBP1, ELAVL1, SUMO2, MAPK14, Protein Size: 1045
Molecular Weight:	115 kDa
Gene ID:	91748
NCBI Accession:	NM_194278 , NP_919254
UniProt:	Q6PJG2

Application Details

Application Notes:	Optimal working dilutions should be determined experimentally by the investigator.
Comment:	Antigen size: 1045 AA
Restrictions:	For Research Use only

Handling

Format:	Liquid
Concentration:	Lot specific
Buffer:	Liquid. Purified antibody supplied in 1x PBS buffer with 0.09 % (w/v) sodium azide and 2 % sucrose.
Preservative:	Sodium azide
Precaution of Use:	This product contains Sodium azide: a POISONOUS AND HAZARDOUS SUBSTANCE which should be handled by trained staff only.
Handling Advice:	Avoid repeated freeze-thaw cycles.
Storage:	-20 °C
Storage Comment:	For short term use, store at 2-8°C up to 1 week. For long term storage, store at -20°C in small aliquots to prevent freeze-thaw cycles.



Western Blotting

Image 1. Host: Rabbit Target Name: C14orf43 Sample Type: 721_B Whole Cell lysates Antibody Dilution: 1.0ug/ml