

Datasheet for ABIN2790953
anti-C15ORF52 antibody (C-Term)[Go to Product page](#)

1 Image

Overview

Quantity:	100 µL
Target:	C15ORF52
Binding Specificity:	C-Term
Reactivity:	Human, Cow, Horse, Pig
Host:	Rabbit
Clonality:	Polyclonal
Conjugate:	This C15ORF52 antibody is un-conjugated
Application:	Western Blotting (WB)

Product Details

Immunogen:	The immunogen is a synthetic peptide directed towards the C-terminal region of Human C15orf52
Sequence:	EPQRGAGLPE PGEDRSGKSG AQQGLAPRSR PTRGGSQRSR GTAGVRRRTG
Predicted Reactivity:	Cow: 79%, Horse: 79%, Human: 100%, Pig: 86%
Characteristics:	This is a rabbit polyclonal antibody against C15orf52. It was validated on Western Blot.
Purification:	Affinity Purified

Target Details

Target:	C15ORF52
Alternative Name:	C15orf52 (C15ORF52 Products)

Target Details

Background:	The function of this protein remains unknown. Alias Symbols: - Protein Interaction Partner: SUZ12, RNF2, Protein Size: 324
-------------	---

Molecular Weight:	36 kDa
-------------------	--------

Gene ID:	388115
----------	--------

NCBI Accession:	NM_207380 , NP_997263
-----------------	---

Application Details

Application Notes:	Optimal working dilutions should be determined experimentally by the investigator.
--------------------	--

Comment:	Antigen size: 324 AA
----------	----------------------

Restrictions:	For Research Use only
---------------	-----------------------

Handling

Format:	Liquid
---------	--------

Concentration:	Lot specific
----------------	--------------

Buffer:	Liquid. Purified antibody supplied in 1x PBS buffer with 0.09 % (w/v) sodium azide and 2 % sucrose.
---------	---

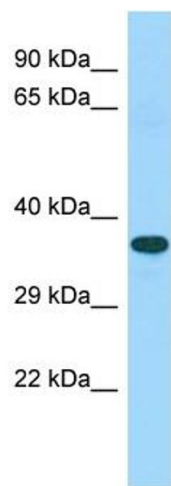
Preservative:	Sodium azide
---------------	--------------

Precaution of Use:	This product contains Sodium azide: a POISONOUS AND HAZARDOUS SUBSTANCE which should be handled by trained staff only.
--------------------	--

Handling Advice:	Avoid repeated freeze-thaw cycles.
------------------	------------------------------------

Storage:	-20 °C
----------	--------

Storage Comment:	For short term use, store at 2-8°C up to 1 week. For long term storage, store at -20°C in small aliquots to prevent freeze-thaw cycles.
------------------	---



Western Blotting

Image 1. Host: Rabbit Target Name: C15orf52 Sample Type: Fetal Heart lysates Antibody Dilution: 1.0ug/ml