



[Go to Product page](#)

Datasheet for ABIN2790963  
**anti-CABS1 antibody (N-Term)**

1 Image

Overview

Quantity:	100 µL
Target:	CABS1
Binding Specificity:	N-Term
Reactivity:	Human
Host:	Rabbit
Clonality:	Polyclonal
Conjugate:	This CABS1 antibody is un-conjugated
Application:	Western Blotting (WB)

Product Details

Immunogen:	The immunogen is a synthetic peptide directed towards the N-terminal region of Human CABS1
Sequence:	TTITSEGDHV TSVNEYMLLES DFSTTTDNKL TAKKEKLEKSE DDMGTDFIKS
Predicted Reactivity:	Human: 100%
Characteristics:	This is a rabbit polyclonal antibody against CABS1. It was validated on Western Blot.
Purification:	Affinity Purified

Target Details

Target:	CABS1
Alternative Name:	CABS1 ( <a href="#">CABS1 Products</a> )
Background:	The function of this protein remains unknown.

## Target Details

---

Alias Symbols: C4orf35, CLPH, NYD-SP26

Protein Size: 395

Molecular Weight: 43 kDa

Gene ID: 85438

NCBI Accession: [NM\\_033122](#), [NP\\_149113](#)

UniProt: [Q96KC9](#)

## Application Details

---

Application Notes: Optimal working dilutions should be determined experimentally by the investigator.

Comment: Antigen size: 395 AA

Restrictions: For Research Use only

## Handling

---

Format: Liquid

Concentration: Lot specific

Buffer: Liquid. Purified antibody supplied in 1x PBS buffer with 0.09 % (w/v) sodium azide and 2 % sucrose.

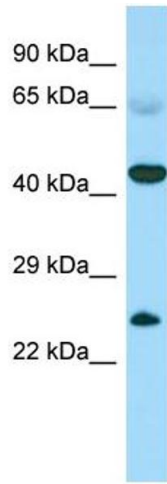
Preservative: Sodium azide

Precaution of Use: This product contains Sodium azide: a POISONOUS AND HAZARDOUS SUBSTANCE which should be handled by trained staff only.

Handling Advice: Avoid repeated freeze-thaw cycles.

Storage: -20 °C

Storage Comment: For short term use, store at 2-8°C up to 1 week. For long term storage, store at -20°C in small aliquots to prevent freeze-thaw cycles.



### Western Blotting

**Image 1.** Host: Rabbit Target Name: CABS1 Sample Type: Fetal Heart lysates Antibody Dilution: 1.0ug/ml