

Datasheet for ABIN2790972  
**anti-CCDC86 antibody (N-Term)**[Go to Product page](#)

## 1 Image

## Overview

Quantity:	100 µL
Target:	CCDC86
Binding Specificity:	N-Term
Reactivity:	Human, Cow, Horse
Host:	Rabbit
Clonality:	Polyclonal
Conjugate:	This CCDC86 antibody is un-conjugated
Application:	Western Blotting (WB)

## Product Details

Immunogen:	The immunogen is a synthetic peptide directed towards the N-terminal region of Human CCDC86
Sequence:	ESPQRQPEYS PESPRCQPKP SEEAPKCSQD QGVLASELAQ NKEELTPGAP
Predicted Reactivity:	Cow: 79%, Horse: 79%, Human: 100%
Characteristics:	This is a rabbit polyclonal antibody against CCDC86. It was validated on Western Blot.
Purification:	Affinity Purified

## Target Details

Target:	CCDC86
Alternative Name:	CCDC86 ( <a href="#">CCDC86 Products</a> )

## Target Details

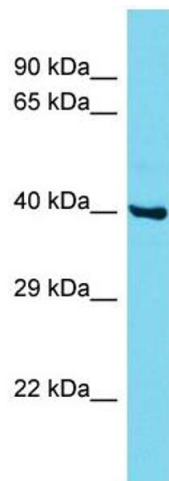
Background:	The function of this protein remains unknown. Alias Symbols: - Protein Interaction Partner: UBC, SRPK3, SIRT7, DLST, Protein Size: 360
Molecular Weight:	40 kDa
Gene ID:	79080
NCBI Accession:	<a href="#">NM_024098</a> , <a href="#">NP_077003</a>
UniProt:	<a href="#">Q9H6F5</a>
Pathways:	<a href="#">SARS-CoV-2 Protein Interactome</a> , <a href="#">The Global Phosphorylation Landscape of SARS-CoV-2 Infection</a>

## Application Details

Application Notes:	Optimal working dilutions should be determined experimentally by the investigator.
Comment:	Antigen size: 360 AA
Restrictions:	For Research Use only

## Handling

Format:	Liquid
Concentration:	Lot specific
Buffer:	Liquid. Purified antibody supplied in 1x PBS buffer with 0.09 % (w/v) sodium azide and 2 % sucrose.
Preservative:	Sodium azide
Precaution of Use:	This product contains Sodium azide: a POISONOUS AND HAZARDOUS SUBSTANCE which should be handled by trained staff only.
Handling Advice:	Avoid repeated freeze-thaw cycles.
Storage:	-20 °C
Storage Comment:	For short term use, store at 2-8°C up to 1 week. For long term storage, store at -20°C in small aliquots to prevent freeze-thaw cycles.



Western Blotting

**Image 1.** Host: Rabbit Target Name: CCDC86 Sample Type: MCF7 Whole Cell lysates Antibody Dilution: 1.0ug/ml  
CCDC86 is supported by BioGPS gene expression data to be expressed in MCF7