

Datasheet for ABIN2790974
anti-CCDC135 antibody (C-Term)



[Go to Product page](#)

1 Image

Overview

Quantity:	100 µL
Target:	CCDC135
Binding Specificity:	C-Term
Reactivity:	Human, Mouse, Rat, Cow, Dog, Guinea Pig, Horse, Rabbit
Host:	Rabbit
Clonality:	Polyclonal
Conjugate:	This CCDC135 antibody is un-conjugated
Application:	Western Blotting (WB)

Product Details

Immunogen:	The immunogen is a synthetic peptide directed towards the C-terminal region of Human CCDC135
Sequence:	ELEVLEILKL REEEAAHTL TISIYDTKRN EKSKEYREAM ERMHHEEHLR
Predicted Reactivity:	Cow: 93%, Dog: 100%, Guinea Pig: 100%, Horse: 100%, Human: 100%, Mouse: 100%, Rabbit: 100%, Rat: 100%
Characteristics:	This is a rabbit polyclonal antibody against CCDC135. It was validated on Western Blot.
Purification:	Affinity Purified

Target Details

Target:	CCDC135
---------	---------

Target Details

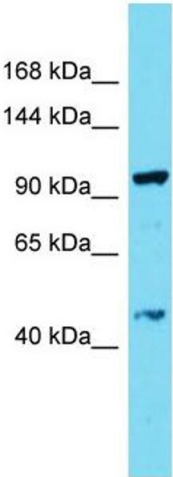
Alternative Name:	CCDC135 (CCDC135 Products)
Background:	<p>CCDC135 plays a role in the regulation of germ cells differentiation during spermatogenesis, particularly during meiosis and spermiogenesis. It may be involved in sperm motility.</p> <p>Alias Symbols: C16orf50</p> <p>Protein Interaction Partner: MBIP,</p> <p>Protein Size: 874</p>
Molecular Weight:	96 kDa
Gene ID:	84229
NCBI Accession:	NM_032269 , NP_115645
UniProt:	Q8IY82

Application Details

Application Notes:	Optimal working dilutions should be determined experimentally by the investigator.
Comment:	Antigen size: 874 AA
Restrictions:	For Research Use only

Handling

Format:	Liquid
Concentration:	Lot specific
Buffer:	Liquid. Purified antibody supplied in 1x PBS buffer with 0.09 % (w/v) sodium azide and 2 % sucrose.
Preservative:	Sodium azide
Precaution of Use:	This product contains Sodium azide: a POISONOUS AND HAZARDOUS SUBSTANCE which should be handled by trained staff only.
Handling Advice:	Avoid repeated freeze-thaw cycles.
Storage:	-20 °C
Storage Comment:	For short term use, store at 2-8°C up to 1 week. For long term storage, store at -20°C in small aliquots to prevent freeze-thaw cycles.



Western Blotting

Image 1. Host: Rabbit Target Name: CCDC135 Sample Type: THP-1 Whole Cell lysates Antibody Dilution: 1.0ug/ml