

Datasheet for ABIN2790995
anti-DENND1C antibody (C-Term)[Go to Product page](#)

1 Image

Overview

Quantity:	100 µL
Target:	DENND1C
Binding Specificity:	C-Term
Reactivity:	Human
Host:	Rabbit
Clonality:	Polyclonal
Conjugate:	This DENND1C antibody is un-conjugated
Application:	Western Blotting (WB)

Product Details

Immunogen:	The immunogen is a synthetic peptide directed towards the C-terminal region of Human DENND1C
Sequence:	PSSLEDPRAR PPKALLAERA HLQPREEPGA LNSPATPTSN CQKSQPSSRP
Predicted Reactivity:	Human: 100%
Characteristics:	This is a rabbit polyclonal antibody against DENND1C. It was validated on Western Blot.
Purification:	Affinity Purified

Target Details

Target:	DENND1C
Alternative Name:	DENND1C (DENND1C Products)

Target Details

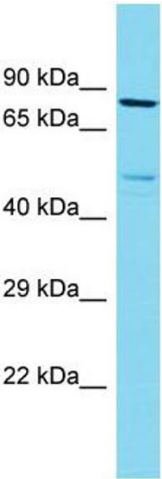
Background:	<p>Clathrin-mediated endocytosis is a major mechanism for internalization of proteins and lipids. Members of the connectin family, such as DENND1C, function as guanine nucleotide exchange factors (GEFs) for the early endosomal small GTPase RAB35 and bind to clathrin and clathrin adaptor protein-2. Thus, connectins link RAB35 activation with the clathrin machinery.</p> <p>Alias Symbols: FAM31C</p> <p>Protein Interaction Partner: APP, ELAVL1,</p> <p>Protein Size: 801</p>
Molecular Weight:	87 kDa
Gene ID:	79958
NCBI Accession:	NM_024898 , NP_079174
UniProt:	Q8IV53

Application Details

Application Notes:	Optimal working dilutions should be determined experimentally by the investigator.
Comment:	Antigen size: 801 AA
Restrictions:	For Research Use only

Handling

Format:	Liquid
Concentration:	Lot specific
Buffer:	Liquid. Purified antibody supplied in 1x PBS buffer with 0.09 % (w/v) sodium azide and 2 % sucrose.
Preservative:	Sodium azide
Precaution of Use:	This product contains Sodium azide: a POISONOUS AND HAZARDOUS SUBSTANCE which should be handled by trained staff only.
Handling Advice:	Avoid repeated freeze-thaw cycles.
Storage:	-20 °C
Storage Comment:	For short term use, store at 2-8°C up to 1 week. For long term storage, store at -20°C in small aliquots to prevent freeze-thaw cycles.



Western Blotting

Image 1. Host: Rabbit Target Name: DENND1C Sample Type: MCF7 Whole Cell lysates Antibody Dilution: 1.0ug/ml