

Datasheet for ABIN2791003
anti-DUS4L antibody (N-Term)



[Go to Product page](#)

1 Image

Overview

Quantity:	100 µL
Target:	DUS4L
Binding Specificity:	N-Term
Reactivity:	Human, Mouse, Horse, Rabbit, Rat, Zebrafish (Danio rerio), Cow, Dog, Guinea Pig
Host:	Rabbit
Clonality:	Polyclonal
Conjugate:	This DUS4L antibody is un-conjugated
Application:	Western Blotting (WB)

Product Details

Immunogen:	The immunogen is a synthetic peptide directed towards the N-terminal region of Human DUS4L
Sequence:	SKLAFRTLVR KYSCDLCYTP MIVAADFVKS IKARDSEFTT NQGDCPLIVQ
Predicted Reactivity:	Cow: 100%, Dog: 100%, Guinea Pig: 100%, Horse: 100%, Human: 100%, Mouse: 100%, Rabbit: 100%, Rat: 100%, Zebrafish: 79%
Characteristics:	This is a rabbit polyclonal antibody against DUS4L. It was validated on Western Blot.
Purification:	Affinity Purified

Target Details

Target:	DUS4L
Alternative Name:	DUS4L (DUS4L Products)

Target Details

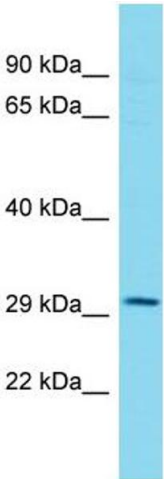
Background:	DUS4L catalyzes the synthesis of dihydrouridine, a modified base found in the D-loop of most tRNAs. Alias Symbols: DUS4, PP35 Protein Interaction Partner: FANCA, Protein Size: 317
Molecular Weight:	35 kDa
Gene ID:	11062
NCBI Accession:	NM_181581 , NP_853559
UniProt:	O95620

Application Details

Application Notes:	Optimal working dilutions should be determined experimentally by the investigator.
Comment:	Antigen size: 317 AA
Restrictions:	For Research Use only

Handling

Format:	Liquid
Concentration:	Lot specific
Buffer:	Liquid. Purified antibody supplied in 1x PBS buffer with 0.09 % (w/v) sodium azide and 2 % sucrose.
Preservative:	Sodium azide
Precaution of Use:	This product contains Sodium azide: a POISONOUS AND HAZARDOUS SUBSTANCE which should be handled by trained staff only.
Handling Advice:	Avoid repeated freeze-thaw cycles.
Storage:	-20 °C
Storage Comment:	For short term use, store at 2-8°C up to 1 week. For long term storage, store at -20°C in small aliquots to prevent freeze-thaw cycles.



Western Blotting

Image 1. Host: Rabbit Target Name: DUS4L Sample Type: Hela Whole cell lysates Antibody Dilution: 1.0ug/ml