



[Go to Product page](#)

Datasheet for ABIN2791005  
**anti-EFTUD1 antibody (N-Term)**

1 Image

Overview

Quantity:	100 µL
Target:	EFTUD1
Binding Specificity:	N-Term
Reactivity:	Human, Mouse, Rat, Horse, Rabbit, Cow, Dog, Guinea Pig
Host:	Rabbit
Clonality:	Polyclonal
Conjugate:	This EFTUD1 antibody is un-conjugated
Application:	Western Blotting (WB)

Product Details

Immunogen:	The immunogen is a synthetic peptide directed towards the N-terminal region of Human EFTUD1
Sequence:	KVLEERAERE TESQVNPNSE QGEQVYDWST GLEDTDDSHL YFSPEQGNVV
Predicted Reactivity:	Cow: 93%, Dog: 100%, Guinea Pig: 100%, Horse: 79%, Human: 100%, Mouse: 100%, Rabbit: 100%, Rat: 100%
Characteristics:	This is a rabbit polyclonal antibody against EFTUD1. It was validated on Western Blot.
Purification:	Affinity Purified

Target Details

Target:	EFTUD1
---------	--------

## Target Details

---

Alternative Name: EFTUD1 ([EFTUD1 Products](#))

---

Background: EFTUD1 is involved in the biogenesis of the 60S ribosomal subunit and translational activation of ribosomes. Together with SBDS, EFTUD1 triggers the GTP-dependent release of EIF6 from 60S pre-ribosomes in the cytoplasm, thereby activating ribosomes for translation competence by allowing 80S ribosome assembly and facilitating EIF6 recycling to the nucleus, where it is required for 60S rRNA processing and nuclear export. EFTUD1 has low intrinsic GTPase activity. GTPase activity is increased by contact with 60S ribosome subunits.

Alias Symbols: FAM42A, HsT19294, RIA1

Protein Interaction Partner: TP53RK, FKBP10, RPRD1B, OSGEP, PANK4, NSUN2, UFM1, KIAA1279, ACTR2, TPD52L2, RANGAP1, LPP, BAG1, UBC,

Protein Size: 1069

---

Molecular Weight: 117 kDa

---

Gene ID: 79631

---

NCBI Accession: [NM\\_001040610](#), [NP\\_001035700](#)

---

Pathways: [Ribonucleoprotein Complex Subunit Organization](#), [Ribosome Assembly](#)

---

## Application Details

---

Application Notes: Optimal working dilutions should be determined experimentally by the investigator.

---

Comment: Antigen size: 1069 AA

---

Restrictions: For Research Use only

---

## Handling

---

Format: Liquid

---

Concentration: Lot specific

---

Buffer: Liquid. Purified antibody supplied in 1x PBS buffer with 0.09 % (w/v) sodium azide and 2 % sucrose.

---

Preservative: Sodium azide

---

Precaution of Use: This product contains Sodium azide: a POISONOUS AND HAZARDOUS SUBSTANCE which should be handled by trained staff only.

---

Handling Advice: Avoid repeated freeze-thaw cycles.

---

## Handling

---

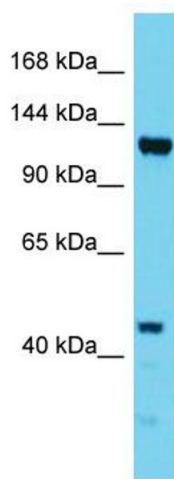
Storage: -20 °C

---

Storage Comment: For short term use, store at 2-8°C up to 1 week. For long term storage, store at -20°C in small aliquots to prevent freeze-thaw cycles.

## Images

---



### Western Blotting

**Image 1.** Host: Rabbit Target Name: EFTUD1 Sample Type: HepG2 Whole Cell lysates Antibody Dilution: 1.0ug/ml