



[Go to Product page](#)

Datasheet for ABIN2791015
anti-FAM110A antibody (C-Term)

1 Image

Overview

Quantity:	100 µL
Target:	FAM110A
Binding Specificity:	C-Term
Reactivity:	Human, Mouse, Rat, Cow, Dog, Guinea Pig, Horse, Rabbit, Zebrafish (Danio rerio)
Host:	Rabbit
Clonality:	Polyclonal
Conjugate:	This FAM110A antibody is un-conjugated
Application:	Western Blotting (WB)

Product Details

Immunogen:	The immunogen is a synthetic peptide directed towards the C-terminal region of Rat Fam110a
Sequence:	SPGRPPGLQR SKSDLSEKFS RAAADLERFF NFCGLDPEEA RGLGVAHLAR
Predicted Reactivity:	Cow: 100%, Dog: 100%, Guinea Pig: 100%, Horse: 100%, Human: 100%, Mouse: 100%, Rabbit: 83%, Rat: 100%, Zebrafish: 75%
Characteristics:	This is a rabbit polyclonal antibody against Fam110a. It was validated on Western Blot.
Purification:	Affinity Purified

Target Details

Target:	FAM110A
Alternative Name:	Fam110a (FAM110A Products)

Target Details

Background: The function of this protein remains unknown.
Alias Symbols: RGD1308904
Protein Size: 326

Molecular Weight: 35 kDa

Gene ID: 311535

NCBI Accession: [NM_001014050](#), [NP_001014072](#)

UniProt: [Q6AXZ9](#)

Application Details

Restrictions: For Research Use only

Handling

Format: Liquid

Concentration: 1 mg/mL

Buffer: Liquid. Purified antibody supplied in 1x PBS buffer with 0.09 % (w/v) sodium azide and 2 % sucrose.

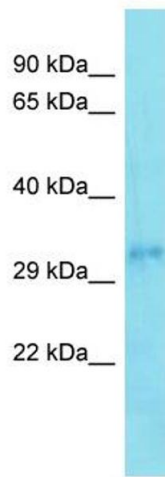
Preservative: Sodium azide

Precaution of Use: This product contains Sodium azide: a POISONOUS AND HAZARDOUS SUBSTANCE which should be handled by trained staff only.

Handling Advice: Avoid repeat freeze-thaw cycles.

Storage: -20 °C

Storage Comment: For short term use, store at 2-8°C up to 1 week. For long term storage, store at -20°C in small aliquots to prevent freeze-thaw cycles.



Western Blotting

Image 1.