

Datasheet for ABIN2791027

anti-G Antigen 12I antibody (C-Term)[Go to Product page](#)**1** Image

Overview

Quantity:	100 µL
Target:	G Antigen 12I (GAGE12I)
Binding Specificity:	C-Term
Reactivity:	Human
Host:	Rabbit
Clonality:	Polyclonal
Conjugate:	This G Antigen 12I antibody is un-conjugated
Application:	Western Blotting (WB)

Product Details

Immunogen:	The immunogen is a synthetic peptide directed towards the C-terminal region of Human GAGE12I
Sequence:	AGQGPKPEAH SQEQGHPQTG CECEDGPDGQ EMDPPNPEEV KTPEEGEKQS
Predicted Reactivity:	Human: 100%
Characteristics:	This is a rabbit polyclonal antibody against GAGE12I. It was validated on Western Blot.
Purification:	Affinity Purified

Target Details

Target:	G Antigen 12I (GAGE12I)
Alternative Name:	GAGE12I (GAGE12I Products)

Target Details

Background:	<p>This gene belongs to a family of genes that are expressed in a variety of tumors but not in normal tissues, except for the testis. The sequences of the family members are highly related but differ by scattered nucleotide substitutions. The antigenic peptide YYWPRPRRY, which is also encoded by several other family members, is recognized by autologous cytolytic T lymphocytes.</p> <p>Alias Symbols: AL4, CT4.7, GAGE-7B, GAGE7B</p> <p>Protein Interaction Partner: GMCL1P1, GMCL1,</p> <p>Protein Size: 117</p>
-------------	--

Molecular Weight:	13 kDa
-------------------	--------

Gene ID:	26748
----------	-------

NCBI Accession:	NM_001477 , NP_001468
-----------------	---

UniProt:	P0CL82
----------	------------------------

Application Details

Application Notes:	Optimal working dilutions should be determined experimentally by the investigator.
--------------------	--

Comment:	Antigen size: 117 AA
----------	----------------------

Restrictions:	For Research Use only
---------------	-----------------------

Handling

Format:	Liquid
---------	--------

Concentration:	Lot specific
----------------	--------------

Buffer:	Liquid. Purified antibody supplied in 1x PBS buffer with 0.09 % (w/v) sodium azide and 2 % sucrose.
---------	---

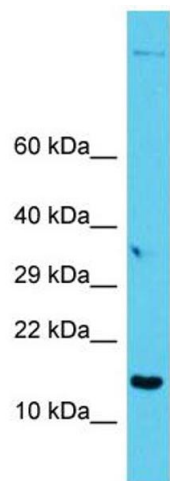
Preservative:	Sodium azide
---------------	--------------

Precaution of Use:	This product contains Sodium azide: a POISONOUS AND HAZARDOUS SUBSTANCE which should be handled by trained staff only.
--------------------	--

Handling Advice:	Avoid repeated freeze-thaw cycles.
------------------	------------------------------------

Storage:	-20 °C
----------	--------

Storage Comment:	For short term use, store at 2-8°C up to 1 week. For long term storage, store at -20°C in small aliquots to prevent freeze-thaw cycles.
------------------	---



Western Blotting

Image 1. Host: Rabbit Target Name: GAGE12I Sample Type: PANC1 Whole Cell lysates Antibody Dilution: 1.0ug/ml