



[Go to Product page](#)

Datasheet for ABIN2791031

anti-GPR141 antibody (Middle Region)

1 Image

Overview

Quantity:	100 µL
Target:	GPR141
Binding Specificity:	Middle Region
Reactivity:	Human, Rabbit
Host:	Rabbit
Clonality:	Polyclonal
Conjugate:	This GPR141 antibody is un-conjugated
Application:	Western Blotting (WB)

Product Details

Immunogen:	The immunogen is a synthetic peptide directed towards the middle region of Human GPR141
Sequence:	DKVEFYRKLH AVAASAGMWT LVIVIVVPLV VSRYGIEHEY NEEHCFKFKH
Predicted Reactivity:	Human: 100%, Rabbit: 89%
Characteristics:	This is a rabbit polyclonal antibody against GPR141. It was validated on Western Blot.
Purification:	Affinity Purified

Target Details

Target:	GPR141
Alternative Name:	GPR141 (GPR141 Products)
Background:	GPR141 is a member of the rhodopsin family of G protein-coupled receptors (GPRs).

Target Details

Alias Symbols: PGR13

Protein Size: 305

Molecular Weight: 35 kDa

Gene ID: 353345

NCBI Accession: [NM_181791](#), [NP_861456](#)

UniProt: [Q7Z602](#)

Application Details

Restrictions: For Research Use only

Handling

Format: Liquid

Concentration: 1 mg/mL

Buffer: Liquid. Purified antibody supplied in 1x PBS buffer with 0.09 % (w/v) sodium azide and 2 % sucrose.

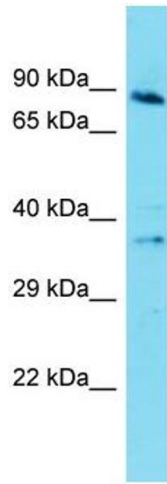
Preservative: Sodium azide

Precaution of Use: This product contains Sodium azide: a POISONOUS AND HAZARDOUS SUBSTANCE which should be handled by trained staff only.

Handling Advice: Avoid repeat freeze-thaw cycles.

Storage: -20 °C

Storage Comment: For short term use, store at 2-8°C up to 1 week. For long term storage, store at -20°C in small aliquots to prevent freeze-thaw cycles.



Western Blotting

Image 1.